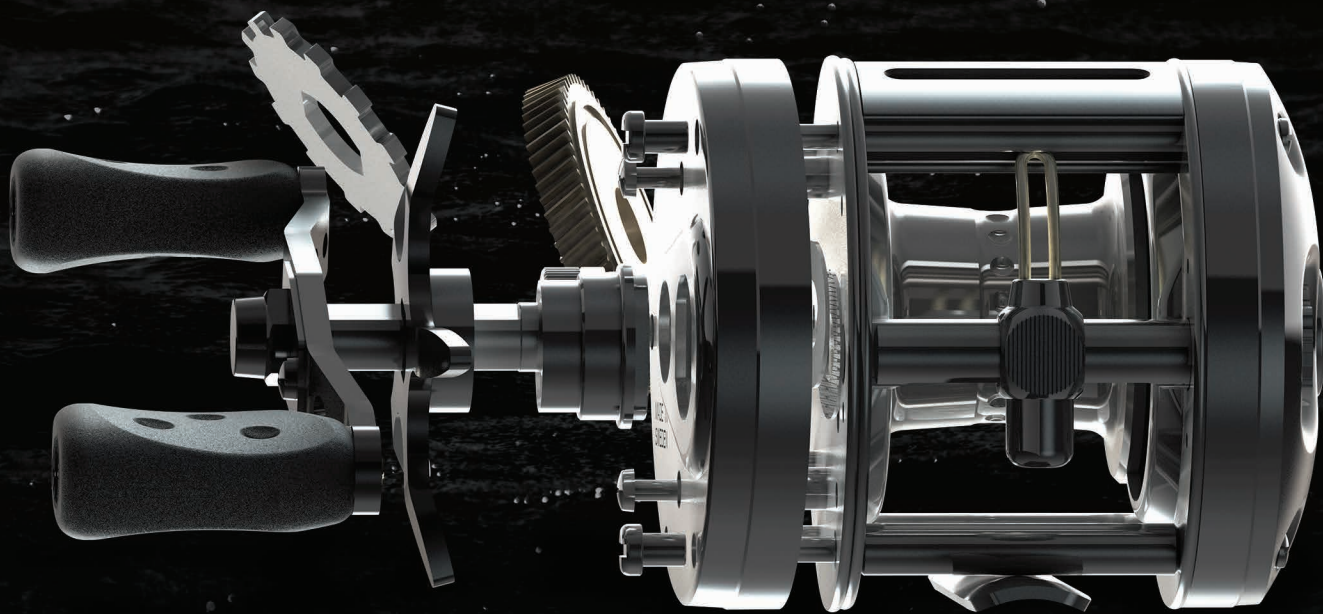




2014



"ALLTING GÅR IGEN."
(EVERYTHING COMES 'ROUND)



A DOKUMENTARY

F O R L I F E

THE STORY OF ABU GARCIA

FROM THE BANKS OF THE MÖRRUM RIVER IN SVÄNGSTA, SWEDEN, A WATCH MAKER EMERGES TO DEVELOP THE WORLD'S MOST SOUGHT AFTER FISHING REELS.



Use your mobile device to learn more
Mobile app at www.abugarcia.com/scan



ABU GARCIA FILMS PRESENTS A PRODUCTION BY THE NEXT BITE TV, INC. EDITED BY DUSTIN HOYE AARON EICKHORST ANIMATION JOSEPH BOWIE JEREMY HINKEMEYER
ART DIRECTOR JOSEPH BOWIE ORIGINAL MUSIC BY PATRICK MCCREADY CHRISTER NILSSON - DIRECTOR OF PHOTOGRAPHY CY DODSON PRODUCED BY DUSTIN HOYE CY DODSON
ASSOCIATE PRODUCERS GRAYCE WEBER PAUL DAVIS MARK BOYD EXECUTIVE PRODUCER CHRIS DERRICK DIRECTED BY DUSTIN HOYE

WATCH THE FILM AT ABUGARCIA.COM/FORLIFE

THE MGX JUST WENT EXTREME

Weighing in at just 4.9oz – a full .5 ounces lighter than the ultra-lightweight MGX – the MGXtreme continues the Revo legacy by pushing the limits of what is possible with design and engineering. Equipped with a 10 bearing system, the MGXtreme starts with seven stainless steel HPCR™ bearings + one roller bearing for increased corrosion protection. The addition of two CeramiLite hybrid ceramic spool bearings results in ultimate distance with effortless handling and control throughout the cast.

- 10 Bearing System
 - 7 stainless steel HPCR™ bearings + 1 roller bearing
 - 2 additional CeramiLite Spool Bearings provide improved casting performance
- One piece X-Mag™ alloy frame provides a super light yet extremely strong frame
- Carbon Matrix™ drag system provides smooth, consistent drag pressure across the entire drag range
- C6 carbon sideplates provide significant weight reduction without sacrificing strength and durability
- IVCB-IV™ (Infinitely Variable Centrifugal Brake) gives very precise brake adjustments allowing anglers to easily cast a wide variety of baits
- Infini II™ spool design for extended castability and extreme loads
- Compact bent carbon handle provides a more ergonomic design that is extremely lightweight
- Round EVA knobs provide improved grip for improved cranking power
- Aircraft grade aluminum main gear provides weight reduction without sacrificing durability
- Titanium coated line guide reduces friction and improves durability
- Recessed reel foot allows for a more ergonomic reel design
- Lube port for easy access maintenance

CERAMILITE SPOOL BEARINGS

2 Ceramilit hybrid ceramic spool bearings enhance castability and deliver precision performance.

EVA KNOBS

Both round and flat EVA knobs are included to provide greater comfort and durability.

CARBON FIBER HANDLE

Compact bent carbon handle provides a more ergonomic design that is extremely lightweight.

X-MAG™ FRAME

The lightweight material provides exceptional corrosion resistance and rigidity for excellent gear alignment.

ALUMINUM PORTED SPOOL

A 10% reduction in spool weight over the standard MGX improves casting performance.

IVCB-IV™ BRAKE SYSTEM

The IVCB-IV is externally adjustable so you can quickly fine tune on the water.



NEW

Use your mobile device to learn more
Mobile app at www.abugarcia.com/scan



MODEL #	SAP #	MONO CAPACITY	BRAID CAPACITY	MAX DRAG	GEAR RATIO	INCHES PER TURN	WEIGHT	BEARINGS	HAND RETRIEVE
REVOMGXTREME	1292536 Box	12 lb/115 yd	30 lb/110 yd	12 lb	7.1:1	28	4.9 oz	10	Right
REVOMGXTREME-L	1311898 Box	12 lb/115 yd	30 lb/110 yd	12 lb	7.1:1	28	4.9 oz	10	Left

SUPER LIGHT, EXTREMELY STRONG. ONLY 5.4 OUNCES

The 5.4 ounce Revo MGX. A combination of enhanced compact design with our ground-breaking X-Mag™ alloy frame and C6 carbon sideplates produces the evolution of ultra-lightweight low profile reel technology. More than mere lightweight design, the Revo MGX features the IVCB-IV™ (Infinitely Variable Centrifugal Brake) that sets the standard for cast control in all other reels.

- 9 stainless steel HPCR™ bearings + 1 roller bearing provides increased corrosion protection
- One piece X-Mag™ alloy frame provides a super light yet extremely strong frame
- Infini II™ spool design for extended castability and extreme loads
- C6 carbon sideplates provide significant weight reduction without sacrificing strength and durability
- Carbon Matrix™ drag system provides smooth, consistent drag pressure across the entire drag range
- Aircraft grade aluminum main gear provides weight reduction without sacrificing durability
- IVCB-IV™ (Infinitely Variable Centrifugal Brake) gives very precise brake adjustments allowing anglers to easily cast a wide variety of baits
- Compact bent carbon handle provides a more ergonomic design that is extremely lightweight
- Flat EVA knobs provide greater comfort and durability
- Titanium coated line guide reduces friction and improves durability
- Recessed reel foot allows for a more ergonomic reel design

IVCB-IV™ BRAKE SYSTEM

The IVCB-IV is externally adjustable so you can quickly fine tune on the water.

CARBON FIBER HANDLE

Compact bent carbon handle provides a more ergonomic design that is extremely lightweight.

EVA KNOBS

Flat EVA knobs provide greater comfort and durability.

X-MAG™ FRAME

The lightweight material provides exceptional corrosion resistance and rigidity for excellent gear alignment.

C6 SIDEPLATES

The advanced construction of C6 Carbon sideplates provides 54% weight reduction over aluminum while maintaining the strength needed for exceptional gear alignment.



Use your mobile device to learn more
Mobile app at www.abugarcia.com/scan



MODEL #	SAP #	MONO CAPACITY	BRAID CAPACITY	MAX DRAG	GEAR RATIO	INCHES PER TURN	WEIGHT	BEARINGS	HAND RETRIEVE
REVO MGX	1237069 Box	12 lb/115 yd	30 lb/110 yd	12 lb	7.1:1	28	5.4 oz	10	Right
REVO MGX-L	1239023 Box	12 lb/115 yd	30 lb/110 yd	12 lb	7.1:1	28	5.4 oz	10	Left
REVO MGX-SHS	1239022 Box	12 lb/115 yd	30 lb/110 yd	12 lb	7.9:1	31	5.4 oz	10	Right
REVO MGX-SHS-L	1239024 Box	12 lb/115 yd	30 lb/110 yd	12 lb	7.9:1	31	5.4 oz	10	Left

PRECISION ENGINEERING AT ITS FINEST

The Revo Premier features a lighter, more compact design that crosses the sub six ounce barrier by utilizing advanced materials that includes C6 Carbon sideplates and an upgraded carbon fiber handle. The wider spool further improves casting performance without increasing the overall width of the reel. The IVCB-IV Braking System, also used in the MGXtreme and MGX, delivers precise control, whether casting heavy jigs or lightweight finesse baits.

- 10 stainless steel HPCR™ bearings + 1 roller bearing provides increased corrosion protection
- X²-Cräftic™ alloy frame for increased corrosion resistance
- C6 carbon sideplates provide significant weight reduction without sacrificing strength and durability
- Carbon Matrix™ drag system provides smooth, consistent drag pressure across the entire drag range
- D2 Gear Design™ provides a more efficient gear system while improving gear durability
- IVCB-IV™ (Infinitely Variable Centrifugal Brake) gives very precise brake adjustments allowing anglers to easily cast a wide variety of baits
- Infini II™ spool design for extended castability and extreme loads
- Compact bent carbon handle provides a more ergonomic design that is extremely lightweight
- Flat EVA knobs provide greater comfort and durability
- Titanium coated line guide reduces friction and improves durability



IVCB-IV™ BRAKE SYSTEM

The Infinitely Variable Centrifugal Brake (IVCB-IV) system has been designed to give anglers the ability to throw a wide range of different weighted baits and specializes in the ability to throw lightweight finesse style baits. The IVCB-IV is externally adjustable so you can quickly fine tune on the water.

MODEL #	SAP #	MONO CAPACITY	BRAID CAPACITY	MAX DRAG	GEAR RATIO	INCHES PER TURN	WEIGHT	BEARINGS	HAND RETRIEVE
RV03 PRM	1264553 Box	12 lb/145 yd	30 lb/140yd	20 lb	6.4:1	26	5.85 oz	11	Right
RV03 PRM-L	1264554 Box	12 lb/145 yd	30 lb/140yd	20 lb	6.4:1	26	5.85 oz	11	Left
RV03 PRM-HS	1264555 Box	12 lb/145 yd	30 lb/140yd	20 lb	7.1:1	29	5.85 oz	11	Right

ROCKET FAST RETRIEVE WITH SMOOTH PERFORMANCE

You have never experienced speed like this before. An impressive 37 inches of line retrieve per turn of the crank handle makes the new Rocket the fastest low profile in the Revo lineup. Whether you are walking-the-dog with topwater lures or burning up spinnerbaits, buzzbaits or crankbaits, the Revo Rocket delivers the ultimate package for techniques requiring a high speed retrieve.

- 10 stainless steel HPCR™ bearings + 1 roller bearing provides increased corrosion protection
- Rocket Gear Ratio provides superfast line retrieve for picking up line quickly
- X²-Cräftic™ alloy frame and sideplates for increased corrosion resistance
- Carbon Matrix™ drag system provides smooth, consistent drag pressure across the entire drag range
- D2 Gear Design™ provides a more efficient gear system while improving gear durability
- Infini™ brake system allows almost limitless adjustability to handle any fishing situation
- Infini II™ spool design for extended castability and extreme loads
- Extended bent carbon handle for increased cranking power
- Large EVA knobs provide improved grip
- Titanium coated line guide reduces friction and improves durability



INFINI™ BRAKE DESIGN

Combines a magnetic brake and sealed centrifugal brake, which allows an almost limitless adjustment to suit any fishing situation. The centrifugal brake will control the first half of the cast, when the spool is rotating at its maximum speed. Once the spool slows, the magnetic brake then acts on the spool to keep it under control during the last half of the cast.

NEW

Use your mobile device to learn more
Mobile app at www.abugarcia.com/scan



MODEL #	SAP #	MONO CAPACITY	BRAID CAPACITY	MAX DRAG	GEAR RATIO	INCHES PER TURN	WEIGHT	BEARINGS	HAND RETRIEVE
RV03 ROCKET	1292769 Box	12 lb/145 yd	30 lb/140yd	20 lb	9.0:1	37	6.75 oz	11	Right
RV03 ROCKET-L	1292770 Box	12 lb/145 yd	30 lb/140yd	20 lb	9.0:1	37	6.75 oz	11	Left

SUPERIOR CASTING CONTROL AND PRECISION

The Revo STX features the widest range of gear ratios in the Revo family with 6.4:1, 7.1:1 and a new super high speed 8.0:1 ratio model.

- 10 stainless steel HPCR™ bearings + 1 roller bearing provides increased corrosion protection
- X²-Cräftic™ alloy frame for increased corrosion resistance
- C6 carbon sideplates provide significant weight reduction without sacrificing strength and durability
- Carbon Matrix™ drag system provides smooth, consistent drag pressure across the entire drag range
- D2 Gear Design™ provides a more efficient gear system while improving gear durability
- Infini™ brake system allows almost limitless adjustability to handle any fishing situation
- Infini II™ spool design for extended castability and extreme loads
- Compact bent handle and star provide a more ergonomic design
- Titanium coated line guide reduces friction and improves durability



INFINI™ BRAKE DESIGN

Combines a magnetic brake and sealed centrifugal brake, which allows an almost limitless adjustment to suit any fishing situation. The centrifugal brake will control the first half of the cast, when the spool is rotating at its maximum speed. Once the spool slows, the magnetic brake then acts on the spool to keep it under control during the last half of the cast.

MODEL #	SAP #	MONO CAPACITY	BRAID CAPACITY	MAX DRAG	GEAR RATIO	INCHES PER TURN	WEIGHT	BEARINGS	HAND RETRIEVE
RV03 STX	1265419 Box	12 lb/145 yd	30 lb/140yd	20 lb	6.4:1	26	6.35 oz	11	Right
RV03 STX-L	1265420 Box	12 lb/145 yd	30 lb/140yd	20 lb	6.4:1	26	6.35 oz	11	Left
RV03 STX-HS	1264557 Box	12 lb/145 yd	30 lb/140yd	20 lb	7.1:1	29	6.35 oz	11	Right
RV03 STX-HS-L	1264558 Box	12 lb/145 yd	30 lb/140yd	20 lb	7.1:1	29	6.35 oz	11	Left
RV03 STX-SHS	1264556 Box	12 lb/145 yd	30 lb/140yd	20 lb	8.0:1	33	6.35 oz	11	Right

CUTTING EDGE DESIGN WITH ADVANCED PERFORMANCE

The Revo SX has a more powerful D2 Gear System, the next generation of Duragear™, which provides enhanced efficiency and precision when on the water.

- 9 stainless steel ball bearings + 1 roller bearing provides smooth operation
- X²-Cräftic™ alloy frame for increased corrosion resistance
- C6 carbon handle sideplate provides significant weight reduction without sacrificing strength and durability
- Carbon Matrix™ drag system provides smooth, consistent drag pressure across the entire drag range
- D2 Gear Design™ provides a more efficient gear system while improving gear durability
- Titanium coated line guide reduces friction and improves durability
- MagTrax™ brake system gives consistent brake pressure throughout the cast
- Infini II™ spool design for extended castability and extreme loads
- Compact bent handle and star provide a more ergonomic design



MODEL #	SAP #	MONO CAPACITY	BRAID CAPACITY	MAX DRAG	GEAR RATIO	INCHES PER TURN	WEIGHT	BEARINGS	HAND RETRIEVE
RV03 SX	1265421 Box	12 lb/145 yd	30 lb/140yd	20 lb	6.4:1	26	6.65 oz	10	Right
RV03 SX-L	1265422 Box	12 lb/145 yd	30 lb/140yd	20 lb	6.4:1	26	6.65 oz	10	Left
RV03 SX-HS	1265423 Box	12 lb/145 yd	30 lb/140yd	20 lb	7.1:1	29	6.65 oz	10	Right
RV03 SX-HS-L	1265424 Box	12 lb/145 yd	30 lb/140yd	20 lb	7.1:1	29	6.65 oz	10	Left

THE NEXT GENERATION OF LOW PROFILE DESIGN

Whether you want distance or control, the pitch centrifugal brake system in the Revo S provides the best of both worlds. With a combination of 3 self adjusting spring loaded brake blocks and 3 non-spring loaded brake blocks, the Pitch centrifugal brake can be adjusted to suit any fishing situation.

- 7 stainless steel ball bearings + 1 roller bearing provides smooth operation
- X²-Cräftic™ alloy frame for increased corrosion resistance
- Carbon Matrix™ drag system provides smooth, consistent drag pressure across the entire drag range
- Pitch centrifugal brake system
- D2 Gear Design™ provides a more efficient gear system while improving gear durability
- Compact bent handle and star provide a more ergonomic design



PITCH CENTRIFUGAL BRAKE

Utilizes 6 brake blocks (3 spring loaded and 3 non spring loaded). The spring loaded brake blocks act only when the spool is under high revolution (1st part of the cast) and will then disengage to give maximum distance. The non spring loaded brake blocks act on the entire cast to give maximum control throughout the cast.

MODEL #	SAP #	MONO CAPACITY	BRAID CAPACITY	MAX DRAG	GEAR RATIO	INCHES PER TURN	WEIGHT	BEARINGS	HAND RETRIEVE
RV03 S	1265425 Box	12 lb/145 yd	30 lb/140yd	20 lb	6.4:1	26	7.44 oz	8	Right
RV03 S-L	1265426 Box	12 lb/145 yd	30 lb/140yd	20 lb	6.4:1	26	7.44 oz	8	Left

SUPERIOR CRANKING POWER FOR HIGH RESISTANCE BAITS

Designed with a low 5.4:1 gear ratio, the Revo Winch is developed specifically for use with crankbaits and other high resistance baits. An extended ergonomic handle design features larger EVA knobs which further improves comfort while cranking deep diving baits.

- 8 stainless steel ball bearings + 1 roller bearing provides smooth operation
- X²-Cräftic™ alloy frame and sideplate for increased corrosion resistance
- C6 carbon sideplates provide significant weight reduction without sacrificing strength and durability
- Carbon Matrix™ drag system provides smooth, consistent drag pressure across the entire drag range
- Infini™ brake system allows almost limitless adjustability to handle any fishing situation
- D2 Gear Design™ provides a more efficient gear system while improving gear durability
- Titanium coated line guide reduces friction and improves durability
- Extended bent handle for increased cranking power
- Large EVA knobs provide improved grip
- Dual anti reverse provides additional backup for high pressure situations



MODEL #	SAP #	MONO CAPACITY	BRAID CAPACITY	MAX DRAG	GEAR RATIO	INCHES PER TURN	WEIGHT	BEARINGS	HAND RETRIEVE
RVO3 WNCH	1265428 Box	12 lb/180 yd	30 lb/180yd	20 lb	5.4:1	22	6.91 oz	9	Right
RVO3 WNCH-L	1265429 Box	12 lb/180 yd	30 lb/180yd	20 lb	5.4:1	22	6.91 oz	9	Left

REVO® INSHORE

THE TOUGHEST SALTWATER LOW PROFILE

Designed with the inshore angler in mind, the Revo Inshore features an improved X2-Cräftic™ frame for added corrosion protection and HPCR™ bearings that provide maximum protection under the harshest conditions. Featuring an extended handle with large EVA knobs, the Revo Inshore provides improved grip for added comfort with fighting large inshore species.

- 6 stainless steel HPCR™ bearings + 1 roller bearing provides increased corrosion protection
- X²-Cräftic™ alloy frame for increased corrosion resistance
- D2 Gear Design™ provides a more efficient gear system while improving gear durability
- Carbon Matrix™ drag system provides smooth, consistent drag pressure across the entire drag range
- Pitch centrifugal brake system
- C6 carbon sideplates provide significant weight reduction without sacrificing strength and durability
- Extended bent handle for increased cranking power
- Large EVA knobs provide improved grip
- Dual anti reverse provides additional backup for high pressure situations



MODEL #	SAP #	MONO CAPACITY	BRAID CAPACITY	MAX DRAG	GEAR RATIO	INCHES PER TURN	WEIGHT	BEARINGS	HAND RETRIEVE
RVO3 INS	1265427 Box	12 lb/180 yd	30 lb/180yd	20 lb	7.1:1	29	7.73 oz	7	Right

HIGH CAPACITY SALTWATER PERFORMANCE

Built tough with the next generation of corrosion protection, the X2-Craftic™ frame and sideplates allow for a lifetime of performance in harsh conditions. Both the 50 & 60 sizes include an extended bent handle with large EVA knobs for extra comfort, as well as a single power handle with oversized knob designed to gain additional leverage on hard fighting fish.

These reels are a perfect match for the inshore specific actions of Volatile rods.

- 6 stainless steel HPCR™ bearings + 1 roller bearing provides increased corrosion protection
- X2-Craftic™ alloy frame and sideplate for increased corrosion resistance
- Carbon Matrix™ drag system provides smooth, consistent drag pressure across the entire drag range
- Aircraft grade aluminum spool allows for a high strength spool that is extremely lightweight for greater casting performance
- Pitch centrifugal brake system
- Duragear™ brass gear for extended gear life
- Lube port for easy access maintenance
- Synchronized level wind system improves line lay and castability
- Titanium coated line guide reduces friction and improves durability
- Extended bent handle with power knobs for increased cranking power

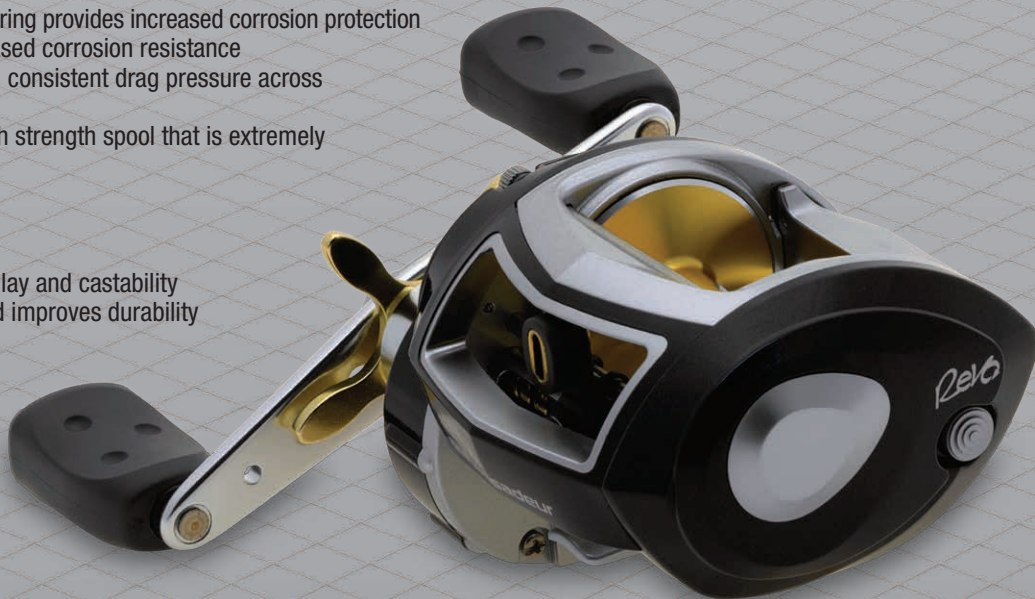


MODEL #	SAP #	MONO CAPACITY	BRAID CAPACITY	MAX DRAG	GEAR RATIO	INCHES PER TURN	WEIGHT	BEARINGS	HAND RETRIEVE
RVO TORO NaCl50	1287061 Box	14 lb/200 yd	30 lb/250 yd	22 lb	5.4:1	26	10.9 oz	7	Right
RVO TORO NaCl51	1287062 Box	14 lb/200 yd	30 lb/250 yd	22 lb	5.4:1	26	10.9 oz	7	Left
RVO TORO NaCl50HS	1265430 Box	14 lb/200 yd	30 lb/250 yd	22 lb	6.4:1	31	10.9 oz	7	Right
RVO TORO NaCl60	1287063 Box	14 lb/250 yd	30 lb/330 yd	22 lb	5.4:1	26	11.0 oz	7	Right
RVO TORO NaCl61	1287064 Box	14 lb/250 yd	30 lb/330 yd	22 lb	5.4:1	26	11.0 oz	7	Left
RVO TORO NaCl60HS	1265431 Box	14 lb/250 yd	30 lb/330 yd	22 lb	6.4:1	31	11.0 oz	7	Right

REVO® TORO WINCH™

SUPERIOR CRANKING POWER IN A LARGE CAPACITY REVO REEL

- 6 stainless steel HPCR™ bearings + 1 roller bearing provides increased corrosion protection
- X-Craftic™ alloy frame and sideplate for increased corrosion resistance
- Carbon Matrix™ drag system provides smooth, consistent drag pressure across the entire drag range
- Aircraft grade aluminum spool allows for a high strength spool that is extremely lightweight for greater casting performance
- Pitch centrifugal brake system
- Duragear™ brass gear for extended gear life
- Lube port for easy access maintenance
- Synchronized level wind system improves line lay and castability
- Titanium coated line guide reduces friction and improves durability



MODEL #	SAP #	MONO CAPACITY	BRAID CAPACITY	MAX DRAG	GEAR RATIO	INCHES PER TURN	WEIGHT	BEARINGS	HAND RETRIEVE
RVO TR WNCH 50	1156774 Box	14 lb/200 yd	30 lb/250 yd	22 lb	4.6:1	22	10.3 oz	7	Right
RVO TR WNCH 60	1156776 Box	14 lb/250 yd	30 lb/330 yd	22 lb	4.6:1	22	10.8 oz	7	Right
RVO TR WNCH 61	1156777 Box	14 lb/250 yd	30 lb/330 yd	22 lb	4.6:1	22	10.8 oz	7	Left

THE PERFECT BLEND OF PERFORMANCE AND STYLE

Inspired by the Revo lineup, the Orra SX delivers proven performance and durability in a compact package. Advanced engineering and precision components make this reel the perfect choice for anglers that demand the best from their equipment.

- 7 stainless steel ball bearings + 1 roller bearing provides smooth operation
- X-Craft™ alloy frame for increased corrosion resistance
- Graphite sideplates
- Power Disk™ drag system gives smooth drag performance
- MagTrax™ brake system gives consistent brake pressure throughout the cast
- Compact bent handle and star provide a more ergonomic design
- Duragear™ brass gear for extended gear life



MAGTRAX™ BRAKE SYSTEM

A turn of the dial moves the magnetic braking system closer to the spool which allows for additional cast control and braking force.

POWER DISK™ DRAG

This proven system gives anglers smooth reliable drag performance throughout the drag range.

NEW

Use your mobile device to learn more
Mobile app at www.abugarcia.com/scan



MODEL #	SAP #	MONO CAPACITY	BRAID CAPACITY	MAX DRAG	GEAR RATIO	INCHES PER TURN	WEIGHT	BEARINGS	HAND RETRIEVE
ORRA2SX	1292530 Box	12 lb/145 yd	30 lb/140yd	15 lb	6.4:1	26	7.3 oz	8	Right
ORRA2SX-L	1292531 Box	12 lb/145 yd	30 lb/140yd	15 lb	6.4:1	26	7.3 oz	8	Left
ORRA2SX-HS	1292532 Box	12 lb/145 yd	30 lb/140yd	15 lb	7.1:1	29	7.3 oz	8	Right

POWERFUL LOW-END TORQUE FOR EFFORTLESS CRANKING

To effectively fish crankbaits and other high resistance lures, anglers need the right reel for the job. With its low 5.4:1 gear ratio, extended bent handle and large handle knobs, the Orra Winch delivers a balanced combination of power and comfort for all cranking applications.

- 7 stainless steel ball bearings + 1 roller bearing provides smooth operation
- X-Craftic™ alloy frame for increased corrosion resistance
- Graphite sideplates
- Power Disk™ drag system gives smooth drag performance
- MagTrax™ brake system gives consistent brake pressure throughout the cast
- Duragear™ brass gear for extended gear life
- Extended bent handle for increased cranking power
- Large PVC knobs provide greater grip



NEW

MODEL #	SAP #	MONO CAPACITY	BRAID CAPACITY	MAX DRAG	GEAR RATIO	INCHES PER TURN	WEIGHT	BEARINGS	HAND RETRIEVE
ORRA2WINCH	1292533 Box	12 lb/180 yd	30 lb/180 yd	15 lb	5.4:1	22	7.6 oz	8	Right
ORRA2WINCH-L	1292534 Box	12 lb/180 yd	30 lb/180 yd	15 lb	5.4:1	22	7.6 oz	8	Left

ORRA® INSHORE

ENGINEERED TO EXCEL IN HARSH SALTWATER ENVIRONMENTS

Designed to meet the needs of the inshore angler, the Orra Inshore combines value and performance in a lightweight, compact package. Corrosion fighting components including an X-Craftic™ alloy frame and stainless steel HPCR™ bearings provide excellent protection in saltwater. An extended bent handle, oversized handle knobs and strong Duragear™ brass gear give anglers added leverage and power for hard pulling inshore species.

- 6 stainless steel HPCR™ bearings + 1 roller bearing provides increased corrosion protection
- X-Craftic™ alloy frame for increased corrosion resistance
- Graphite sideplates
- Carbon Matrix™ hybrid drag system for super smooth reliable drag performance
- MagTrax™ brake system gives consistent brake pressure throughout the cast
- Duragear™ brass gear for extended gear life
- Extended bent handle for increased cranking power
- Large PVC knobs provide greater grip
- Titanium coated line guide reduces friction and improves durability



NEW

MODEL #	SAP #	MONO CAPACITY	BRAID CAPACITY	MAX DRAG	GEAR RATIO	INCHES PER TURN	WEIGHT	BEARINGS	HAND RETRIEVE
ORRA2INS	1292535 Box	12 lb/180 yd	30 lb/180 yd	20 lb	7.1:1	29	8.1 oz	7	Right

MAXIMUM PERFORMANCE, PROFESSIONAL RESULTS

It's hard to imagine that we could take a fan favorite like the Max™ family and make it even better. But thanks to advanced technology and materials, the Max reels are precision engineered with a smoother feel and increased performance on the water.

- 7 stainless steel ball bearings + 1 roller bearing provides smooth operation
- Machined double anodized aluminum spool provides strength without adding excess weight
- Power Disk™ drag system gives smooth drag performance
- Duragear™ brass gear for extended gear life
- MagTrax™ brake system gives consistent brake pressure throughout the cast
- Compact bent handle and star provide a more ergonomic design
- Recessed reel foot allows for a more ergonomic reel design
- One piece graphite frame
- Graphite sideplates



MODEL #	SAP #	MONO CAPACITY	BRAID CAPACITY	MAX DRAG	GEAR RATIO	INCHES PER TURN	WEIGHT	BEARINGS	HAND RETRIEVE
PMAX2	1237070 Box / 1237072 Clam	12 lb/145 yd	30 lb/130 yd	15 lb	7.1:1	31	7.9 oz	8	Right
PMAX2-L	1237071 Box	12 lb/145 yd	30 lb/130 yd	15 lb	7.1:1	31	7.9 oz	8	Left

PERFORMANCE AND TOUGHNESS IN A LOW PROFILE REEL

- 5 stainless steel ball bearings + 1 roller bearing provides smooth operation
- Machined aluminum spool provides strength without adding excess weight
- Power Disk™ drag system gives smooth drag performance
- Duragear™ brass gear for extended gear life
- MagTrax™ brake system gives consistent brake pressure throughout the cast
- Compact bent handle and star provide a more ergonomic design
- Recessed reel foot allows for a more ergonomic reel design
- One piece graphite frame
- Graphite sideplates



MODEL #	SAP #	MONO CAPACITY	BRAID CAPACITY	MAX DRAG	GEAR RATIO	INCHES PER TURN	WEIGHT	BEARINGS	HAND RETRIEVE
SMAx2	1237073 Box / 1237074 Clam	12 lb/145 yd	30 lb/130 yd	15 lb	6.4:1	28	8.0 oz	6	Right
SMAx2-L	1237075 Box / 1257405 Clam	12 lb/145 yd	30 lb/130 yd	15 lb	6.4:1	28	8.0 oz	6	Left

BLACK MAX™

MAXIMUM PERFORMANCE AND VALUE

- 4 stainless steel ball bearings + 1 roller bearing provides smooth operation
- Machined aluminum spool provides strength without adding excess weight
- Power Disk™ drag system gives smooth drag performance
- Duragear™ brass gear for extended gear life
- MagTrax™ brake system gives consistent brake pressure throughout the cast
- Compact bent handle and star provide a more ergonomic design
- Recessed reel foot allows for a more ergonomic reel design
- One piece graphite frame
- Graphite sideplates



MODEL #	SAP #	MONO CAPACITY	BRAID CAPACITY	MAX DRAG	GEAR RATIO	INCHES PER TURN	WEIGHT	BEARINGS	HAND RETRIEVE
BMAx2	1237076 Box / 1237077 Clam	12 lb/145 yd	30 lb/130 yd	15 lb	6.4:1	28	7.9 oz	5	Right
BMAx2-L	1237078 Box / 1237079 Clam	12 lb/145 yd	30 lb/130 yd	15 lb	6.4:1	28	7.9 oz	5	Left

PRECISION CASTING AND CONTROL IN THE ULTIMATE ROUND REEL

Not just any reel has what it takes to bear the Mörrum name - introducing the new Mörrum ZX. From its machined aluminum frame and sideplates to bent carbon handle and flat EVA knobs, no detail was spared in designing the ultimate round reel. Compact design coupled with the renowned IVCB-IV™ (Infinitely Variable Centrifugal Brake) system enables anglers to cast ultra-lightweight lures with precision, accuracy and control.

- 10 stainless steel HPCR™ bearings + 1 roller bearing provides increased corrosion protection
- Machined aluminum frame and sideplates provides strength without excess weight
- Carbon Matrix™ drag system provides smooth, consistent drag pressure across the entire drag range
- IVCB-IV™ (Infinitely Variable Centrifugal Brake) gives very precise brake adjustments allowing anglers to easily cast a wide variety of baits
- Infini II™ spool design for extended castability and extreme loads
- Compact bent carbon handle provides a more ergonomic design that is extremely lightweight
- Flat EVA knobs provide greater comfort and durability
- Titanium coated line guide reduces friction and improves durability
- Recessed reel foot allows for a more ergonomic reel design
- **Made in Sweden**

MACHINED ALUMINUM FRAME AND SIDEPLATES

Machined aluminum frame and sideplates provide exceptional strength and rigidity in a lightweight design.

IVCB-IV™ BRAKE SYSTEM

The IVCB-IV is externally adjustable so you can quickly fine tune on the water.

CARBON FIBER HANDLE

Compact bent carbon handle provides a more ergonomic design that is extremely lightweight.

CARBON MATRIX™ DRAG

The Carbon Matrix drag provides smooth, consistent drag pressure throughout the entire drag setting. Higher drag settings are achievable when compared to most drag materials.

EVA KNOBS

Flat EVA knobs provide greater comfort and durability.



NEW

Use your mobile device to learn more
Mobile app at www.abugarcia.com/scan



MODEL #	SAP #	MONO CAPACITY	BRAID CAPACITY	MAX DRAG	GEAR RATIO	INCHES PER TURN	WEIGHT	BEARINGS	HAND RETRIEVE
MORRUMZX-3600	1292537 Box	12 lb/135 yd	30 lb/135yd	15 lb	6.3:1	28	7.34 oz	11	Right
MORRUMZX-3601	1292538 Box	12 lb/135 yd	30 lb/135yd	15 lb	6.3:1	28	7.34 oz	11	Left

CS PRO ROCKET - BLACK EDITION

ROCK-SOLID DURABILITY AND STYLE ENGINEERED FOR LONG DISTANCE CASTING

The international best seller got an overhaul. Increased stainless steel bearing count and the powerful Carbon Matrix™ drag system make the CS Pro Rocket Black Edition the choice for anglers looking for extra long castability and power.

- 4 stainless steel ball bearings + 1 roller bearing provides smooth operation
- Carbon Matrix™ drag system gives smooth drag performance
- Compact bent handle and star provide a more ergonomic design
- 6 pin centrifugal brake gives consistent brake pressure throughout the cast
- Synchronized level wind system improves line lay and castability
- **Made in Sweden**



NEW

Use your mobile device to learn more
Mobile app at www.abugarcia.com/scan

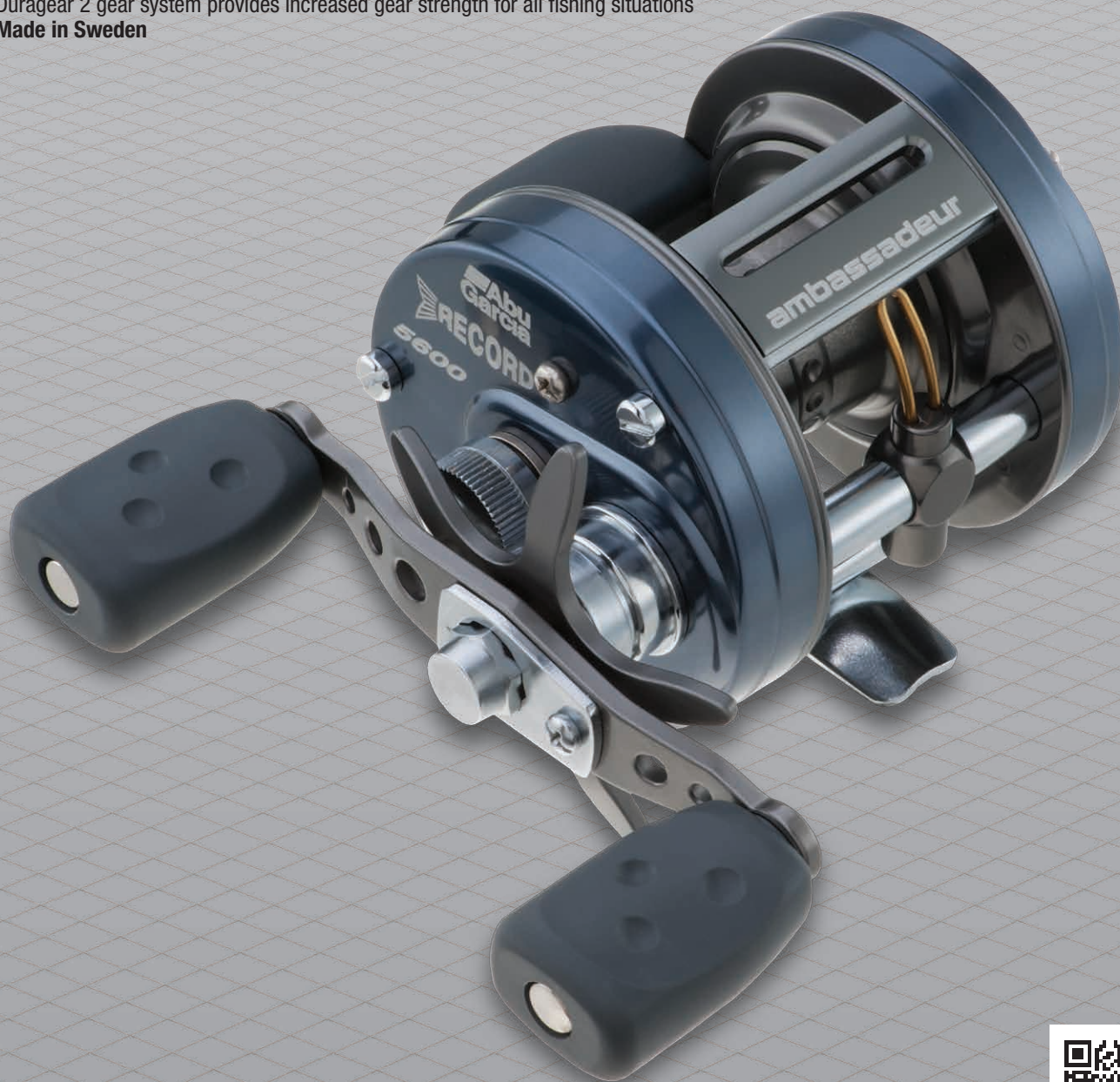


MODEL #	SAP #	MONO CAPACITY	BRAID CAPACITY	MAX DRAG	GEAR RATIO	INCHES PER TURN	WEIGHT	BEARINGS	HAND RETRIEVE
6500CSBPROROCKET	1292742 Box	14 lb/275 yd	30 lb/310 yd	15 lb	5.3:1	26	11.4 oz	5	Right

LEGENDARY POWER AND STYLE TO LAND YOUR NEXT RECORD

With 70+ years of notoriety, the next generation of Record reels continues the legacy of craftsmanship and design that has made this reel an icon. Improved Duragear 2 gear design and 8 bearing system deliver great casting performance and dependability.

- 7 stainless steel HPCR™ bearings + 1 roller bearing provides increased corrosion protection
- Carbon Matrix™ drag system provides smooth, consistent drag pressure across the entire drag range
- Compact bent handle and star provide a more ergonomic design
- 6 pin centrifugal brake gives consistent brake pressure throughout the cast
- Synchronized level wind system improves line lay and castability
- High capacity models available
- Duragear 2 gear system provides increased gear strength for all fishing situations
- **Made in Sweden**



NEW

Use your mobile device to learn more
Mobile app at www.abugarcia.com/scan

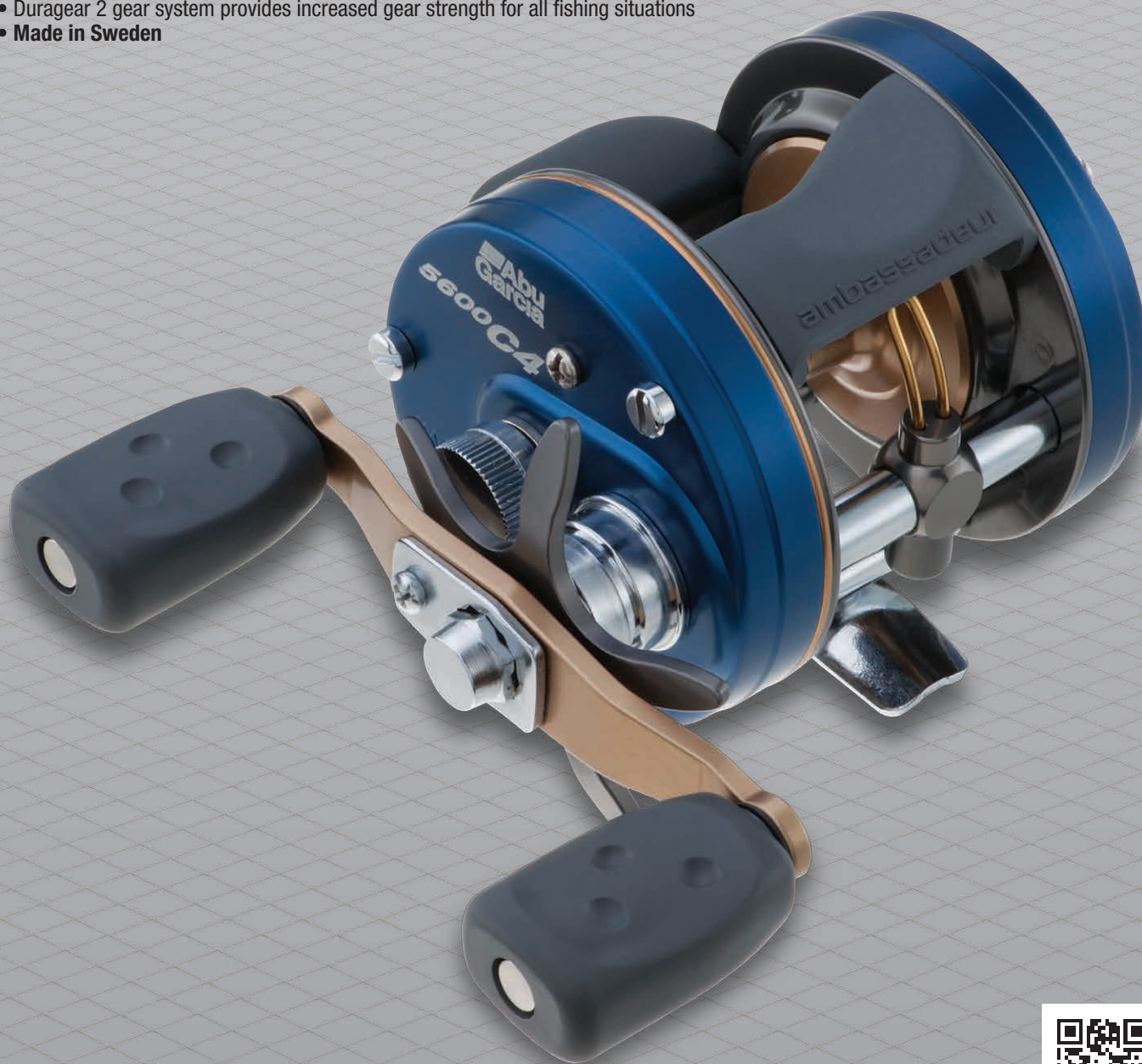


MODEL #	SAP #	MONO CAPACITY	BRAID CAPACITY	MAX DRAG	GEAR RATIO	INCHES PER TURN	WEIGHT	BEARINGS	HAND RETRIEVE
RCN-5600	1292709 Box	12 lb/135 yd	30 lb/135	15 lb	6.8:1	33	10.2 oz	8	Right
RCN-6600	1292710 Box	12 lb/180 yd	30 lb/175	15 lb	5.3:1	26	10.9 oz	8	Right
RCN-6600HC	1292711 Box	12 lb/320 yd	30 lb/310	15 lb	4.7:1	23	11.8 oz	8	Right
RCN-6601HC	1292712 Box	12 lb/320 yd	30 lb/310	15 lb	4.7:1	23	11.8 oz	8	Left

SMOOTH PERFORMANCE, RENOWNED DURABILITY

The tradition continues. With silky-smooth operation and power to spare, the new line of C4 round reels embodies trusted durability and engineering that generations of anglers have come to expect.

- 4 stainless steel ball bearings + 1 roller bearing provides smooth operation
- Carbon Matrix™ drag system gives smooth drag performance
- Compact bent handle and star provide a more ergonomic design
- 6 pin centrifugal brake gives consistent brake pressure throughout the cast
- Synchronized level wind system improves line lay and castability
- Duragear 2 gear system provides increased gear strength for all fishing situations
- **Made in Sweden**



NEW

Use your mobile device to learn more
Mobile app at www.abugarcia.com/scan

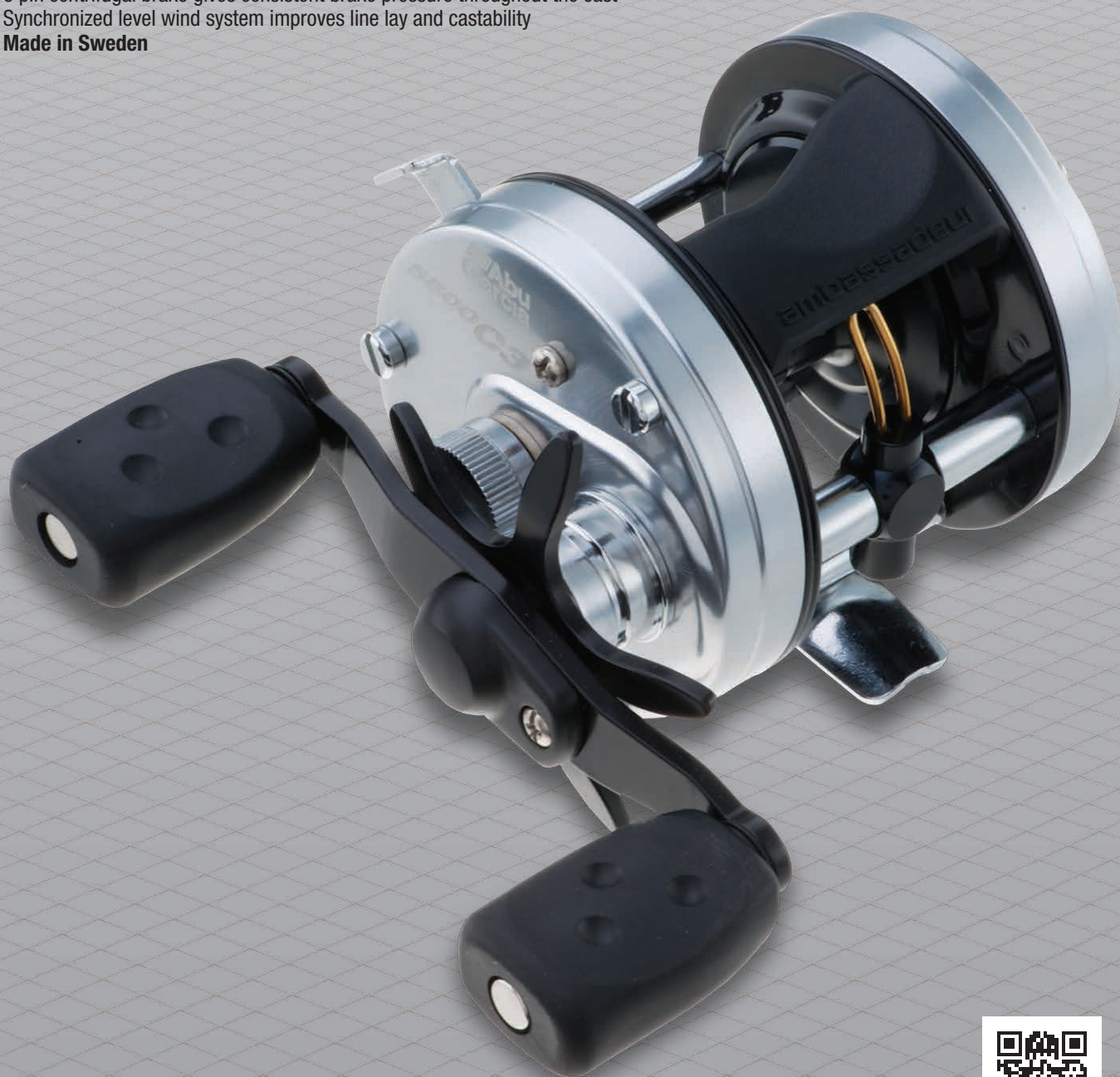


MODEL #	SAP #	MONO CAPACITY	BRAID CAPACITY	MAX DRAG	GEAR RATIO	INCHES PER TURN	WEIGHT	BEARINGS	HAND RETRIEVE
C4-4600	1292713 Box	12 lb/160 yd	30 lb/155 yd	15 lb	6.3:1	30	9.3 oz	5	Right
C4-5600	1292714 Box	12 lb/240 yd	30 lb/235 yd	15 lb	6.3:1	30	10.0 oz	5	Right
C4-5601	1292715 Box	12 lb/240 yd	30 lb/235 yd	15 lb	6.3:1	30	10.0 oz	5	Left
C4-6600	1292716 Box	12 lb/320 yd	30 lb/310 yd	15 lb	6.3:1	30	10.9 oz	5	Right
C4-6601	1292717 Box	12 lb/320 yd	30 lb/310 yd	15 lb	6.3:1	30	10.9 oz	5	Left

BRUTE STRENGTH MEETS REFINED STYLE

Upgraded performance and styling merge with proven strength and engineering. The heritage continues with the new C3, designed to meet the demands of the most hard core angler.

- 3 stainless steel ball bearings + 1 roller bearing provides smooth operation
- Carbon Matrix™ drag system gives smooth drag performance
- Compact bent handle and star provide a more ergonomic design
- 6 pin centrifugal brake gives consistent brake pressure throughout the cast
- Synchronized level wind system improves line lay and castability
- **Made in Sweden**



NEW

Use your mobile device to learn more
Mobile app at www.abugarcia.com/scan



MODEL #	SAP #	MONO CAPACITY	BRAID CAPACITY	MAX DRAG	GEAR RATIO	INCHES PER TURN	WEIGHT	BEARINGS	HAND RETRIEVE
C3-4600	1292718 Box	12 lb/160 yd	30 lb/155 yd	15 lb	5.3:1	26	9.2 oz	4	Right
C3-4601	1292719 Box	12 lb/160 yd	30 lb/155 yd	15 lb	5.3:1	26	9.2 oz	4	Left
C3-5500	1292720 Box	12 lb/240 yd	30 lb/235 yd	15 lb	5.3:1	26	9.9 oz	4	Right
C3-5501	1292721 Box	12 lb/240 yd	30 lb/235 yd	15 lb	5.3:1	26	9.9 oz	4	Left
C3-6500	1292722 Box	12 lb/320 yd	30 lb/310 yd	15 lb	5.3:1	26	10.7 oz	4	Right
C3-6501	1292723 Box	12 lb/320 yd	30 lb/310 yd	15 lb	5.3:1	26	10.7 oz	4	Left

AMBASSADEUR STX

PROGRESSIVE DESIGN, ENGINEERED PERFORMANCE

The STX, SX and S are newest additions to the ambassador round reel family. High performance components and features including the multi disc drag system make the new ambassadors top contenders on the water.

- 4 stainless steel ball bearings + 1 roller bearing provides smooth operation
- Smooth and consistent multi disc drag system
- Compact bent handle and star provide a more ergonomic design
- 6 pin centrifugal brake gives consistent brake pressure throughout the cast
- Synchronized level wind system improves line lay and castability



NEW

Use your mobile device to learn more
Mobile app at www.abugarcia.com/scan



MODEL #	SAP #	MONO CAPACITY	BRAID CAPACITY	MAX DRAG	GEAR RATIO	INCHES PER TURN	WEIGHT	BEARINGS	HAND RETRIEVE
AMBSTX-5600	1292724 Box	14 lb/230 yd	30 lb/265 yd	12 lb	5.9:1	28	10.8 oz	5	Right
AMBSTX-5601	1292725 Box	14 lb/230 yd	30 lb/265 yd	12 lb	5.9:1	28	10.8 oz	5	Left
AMBSTX-6600	1292726 Box	17 lb/255 yd	30 lb/350 yd	12 lb	5.9:1	28	11.6 oz	5	Right
AMBSTX-6601	1292727 Box	17 lb/255 yd	30 lb/350 yd	12 lb	5.9:1	28	11.6 oz	5	Left

RELIABLE POWER FOR A VARIETY OF SPECIES

- 3 stainless steel ball bearings + 1 roller bearing provides smooth operation
- Smooth and consistent multi disc drag system
- Compact bent handle and star provide a more ergonomic design
- 6 pin centrifugal brake gives consistent brake pressure throughout the cast
- Synchronized level wind system improves line lay and castability



NEW

MODEL #	SAP #	MONO CAPACITY	BRAID CAPACITY	MAX DRAG	GEAR RATIO	INCHES PER TURN	WEIGHT	BEARINGS	HAND RETRIEVE
AMBSX-5600	1292728 Box	14 lb/230 yd	30 lb/265 yd	12.5 lb	5.3:1	26	10.6 oz	4	Right
AMBSX-5601	1292729 Box	14 lb/230 yd	30 lb/265 yd	12.5 lb	5.3:1	26	10.6 oz	4	Left
AMBSX-6600	1292730 Box	17 lb/255 yd	30 lb/350 yd	12.5 lb	5.3:1	26	11.3 oz	4	Right
AMBSX-6601	1292731 Box	17 lb/255 yd	30 lb/350 yd	12.5 lb	5.3:1	26	11.3 oz	4	Left

AMBASSADEUR S

VALUE-PACKED POWER AND PERFORMANCE

- 2 stainless steel ball bearings provide smooth operation
- Smooth and consistent multi disc drag system
- Compact bent handle and star provide a more ergonomic design
- 4 pin centrifugal brake gives consistent brake pressure throughout the cast
- Synchronized level wind system improves line lay and castability



NEW

MODEL #	SAP #	MONO CAPACITY	BRAID CAPACITY	MAX DRAG	GEAR RATIO	INCHES PER TURN	WEIGHT	BEARINGS	HAND RETRIEVE
AMBS-5500	1292732 Box / 1292733 Clam	14 lb/230 yd	30 lb/265 yd	11 lb	5.1:1	25	10.5 oz	2	Right
AMBS-5501	1292734 Box / 1292735 Clam	14 lb/230 yd	30 lb/265 yd	11 lb	5.1:1	25	10.5 oz	2	Left
AMBS-6500	1292736 Box / 1292737 Clam	17 lb/255 yd	30 lb/350 yd	11 lb	5.1:1	25	11.1 oz	2	Right
AMBS-6501	1292738 Box / 1292739 Clam	17 lb/255 yd	30 lb/350 yd	11 lb	5.1:1	25	11.1 oz	2	Left

ALPHAMAR™ LINECOUNTER

PRECISION LINE MANAGEMENT HAS NEVER BEEN SIMPLER

In addition to a mechanical line counter that displays the amount of line out in feet, the Alphamar LC Syncro incorporates a highly adjustable syncro drag system. By cranking the handle 1/3 of a turn in a counterclockwise motion, a 50% decrease in drag pressure is achieved. This feature is especially useful when using downriggers as it allows baits to be dropped easily without having to disengage the reel.

- 2 stainless steel ball bearings provides smooth operation
- Carbon Matrix™ drag system provides smooth, consistent drag pressure across the entire drag range
- Syncro™ drag allows drag pressure to be quickly reduced without changing the drag setting
- Machined aluminum spool provides strength without adding excess weight
- Extended throw paddle handle for increased power
- Duragear™ brass gear for extended gear life
- Line Counter
- Graphite frame and sideplates



SYNCRO™ DRAG SYSTEM

To engage the syncro drag, crank the handle 1/3 of a turn in a counterclockwise direction. With the handle in this position, drag is instantly decreased by 50%. This feature is especially useful when using downriggers or trolling as it allows the bait to be deployed without having to disengage the reel. Once lures are in the desired position, crank the handle forward to resume normal operation.

NEW

MODEL #	SAP #	MONO CAPACITY	BRAID CAPACITY	MAX DRAG	GEAR RATIO	INCHES PER TURN	WEIGHT	BEARINGS	HAND RETRIEVE
ALPHAMARLCSYN-16	1292740 Box	15 lb/370 yd	40 lb/415 yd	20 lb	4.7:1	29	17.2 oz	2	Right
ALPHAMARLCSYN-20	1292741 Box	17 lb/410 yd	40 lb/530 yd	20 lb	4.7:1	29	17.6 oz	2	Right

MORE STRENGTH AND FEATURES THAN EVER BEFORE

- 2 stainless steel ball bearings + 1 roller bearing provides smooth operation
- Carbon Matrix™ drag system provides smooth, consistent drag pressure across the entire drag range
- Anti Distortion Spool design for extreme loads
- Duragear™ brass gear for extended gear life
- Synchronized level wind system improves line lay and castability
- Power handle



MODEL #	SAP #	MONO CAPACITY	BRAID CAPACITY	MAX DRAG	GEAR RATIO	INCHES PER TURN	WEIGHT	BEARINGS	HAND RETRIEVE
7000iHSN	1119579 Box	17 lb/210 yd	30 lb/420 yd	17 lb	5.3:1	28	20.0 oz	3	Right
9000i	1121281 Box	20 lb/340 yd	30 lb/790 yd	20 lb	4.2:1	27	25.0 oz	3	Right
10000i	1121282 Box	20 lb/430 yd	30 lb/1000 yd	20 lb	4.2:1	27	26.2 oz	3	Right

LINECOUNTER

PALM-ABLE LINE COUNTER THAT COUNTS IN FEET

- 2 stainless steel ball bearings + 1 roller bearing provides smooth operation
- Carbon Matrix™ drag system provides smooth, consistent drag pressure across the entire drag range
- Power handle
- Counts in feet
- Line out alarm
- Made in Sweden



MODEL #	SAP #	MONO CAPACITY	BRAID CAPACITY	MAX DRAG	GEAR RATIO	INCHES PER TURN	WEIGHT	BEARINGS	HAND RETRIEVE
5500LC	1120893 Box	12 lb/205 yd	30 lb/630 yd	15 lb	5.3:1	25.5	11.3 oz	3	Right
6500LC	1120894 Box	14 lb/245 yd	30 lb/630 yd	15 lb	5.3:1	25.5	13.1 oz	3	Right

PRO ROCKET

AN INTERNATIONAL BEST SELLER

- 2 stainless steel ball bearings + 1 roller bearing provides smooth operation
- Carbon Matrix™ drag system provides smooth, consistent drag pressure across the entire drag range
- Anti Distortion Spool design for extreme loads
- Duragear™ brass gear for extended gear life
- Synchronized level wind system improves line lay and castability
- Power handle



MODEL #	SAP #	MONO CAPACITY	BRAID CAPACITY	MAX DRAG	GEAR RATIO	INCHES PER TURN	WEIGHT	BEARINGS	HAND RETRIEVE
7000iCS	1119548 Box	17 lb/325 yd	30 lb/630 yd	17 lb	4.1:1	22	21 oz	3	Right

7000i C3

THE ULTIMATE IN BIG WATER POWER

- 2 stainless steel ball bearings + 1 roller bearing provides smooth operation
- Carbon Matrix™ drag system provides smooth, consistent drag pressure across the entire drag range
- Anti Distortion Spool design for extreme loads
- Duragear™ brass gear for extended gear life
- Synchronized level wind system improves line lay and castability
- Power handle



MODEL #	SAP #	MONO CAPACITY	BRAID CAPACITY	MAX DRAG	GEAR RATIO	INCHES PER TURN	WEIGHT	BEARINGS	HAND RETRIEVE
7000iC3	1119547 Box	17 lb/325 yd	30 lb/630 yd	17 lb	4.1:1	22.0	21 oz	3	Right

THE ULTIMATE BIG WATER CASTING REEL

- 2 stainless steel HPCR™ bearings + 1 roller bearing provides increased corrosion protection
- Carbon Matrix™ drag system provides smooth, consistent drag pressure across the entire drag range
- Duragear™ brass gear for extended gear life
- MagTrax™ brake system gives consistent brake pressure throughout the cast
- Open CT frame for easy line access
- Dual anti reverse
- Power handle



MODEL #	SAP #	MONO CAPACITY	BRAID CAPACITY	MAX DRAG	GEAR RATIO	INCHES PER TURN	WEIGHT	BEARINGS	HAND RETRIEVE
7000iC3 CT MAG HS	1137735 Box	20 lb/270 yd	30 lb/630 yd	17 lb	5.3:1	28	19.9 oz	3	Right

7000i

AS BIG ON PERFORMANCE AS THEY ARE ON DURABILITY

- Corrosion resistant instant anti reverse bearing provides greater protection
- Smooth and consistent multi disc drag system
- Duragear™ brass gear for extended gear life
- Synchronized level wind system improves line lay and castability
- Dual anti reverse
- Line out alarm
- Power handle



MODEL #	SAP #	MONO CAPACITY	BRAID CAPACITY	MAX DRAG	GEAR RATIO	INCHES PER TURN	WEIGHT	BEARINGS	HAND RETRIEVE
7000i	1116240 Box	17 lb/325 yd	30 lb/630 yd	17 lb	4.1:1	22	21 oz	1	Right
7001i	1120006 Box	17 lb/325 yd	30 lb/630 yd	17 lb	4.1:1	22	21 oz	1	Left

PRECISION ENGINEERING AT ITS FINEST

You've never seen a reel like this before. A spinning reel with the lightweight properties of graphite but with the strength of an all metal body just doesn't come along everyday. The Revo Premier spinning reel provides the best of both worlds in a one-of-a-kind package.

- NanoShield™ body and spool creates an exoskeleton which is up to 300% stronger than graphite and up to 50% lighter than aluminum
- One piece gear box design allows for more precise gear alignment for smoother operation
- 10 stainless steel HPCR™ bearings + 1 roller bearing provides increased corrosion protection
- Sealed Carbon Matrix™ drag system provides smooth, consistent drag pressure across the entire drag range
- Flat EVA knob provides greater comfort and durability
- Lightweight graphite rotor
- Slow oscillation provides even line lay with all types of line
- Everlast™ bail system for improved durability



NanoShield creates a protective exoskeleton which is up to 300% stronger than graphite. It also reduces the weight by up to 50% when compared to similar aluminum components.

MODEL #	SAP #	MONO CAPACITY	BRAID CAPACITY	MAX DRAG	GEAR RATIO	INCHES PER TURN	WEIGHT	BEARINGS	HAND RETRIEVE
PRM10	1236645 Box	6 lb/110 yd	6 lb/150yd	9 lb	5.2:1	25	6.9 oz	11	Left/Right
PRM20	1205561 Box	8 lb/130 yd	8 lb/190 yd	12 lb	5.1:1	27	8.2 oz	11	Left/Right
PRM30	1205560 Box	10 lb/140 yd	10 lb/180 yd	12 lb	5.8:1	33	8.5 oz	11	Left/Right
PRM40	1236646 Box	12 lb/180 yd	14 lb/210 yd	18 lb	5.8:1	33	9.0 oz	11	Left/Right



REVO® INSHORE

ADVANCED DESIGN FOR TOUGH SALTWATER CONDITIONS

Designed with the inshore angler in mind, the Revo Inshore incorporates a NanoShield body for an ultra-lightweight outfit with the strength of a metal body. The braid ready spool design stops superlines from slipping allowing the braid to be tied directly to the spool without the use of a mono or taped backing. Pair the Revo Inshore with the Volatile rod for the ultimate inshore system.

- NanoShield™ body creates an exoskeleton which is up to 300% stronger than graphite and up to 50% lighter than aluminum
- One piece gear box design allows for more precise gear alignment and smoother operation
- Machined aluminum braid ready spool allows braid to be tied directly to the spool without any slip
- 7 stainless steel HPCR™ bearings + 1 roller bearing provides increased corrosion protection
- Sealed Carbon Matrix™ drag provides ultra smooth drag performance, while keeping out unwanted debris
- Flat EVA knob provides greater comfort and durability
- Slow Oscillation provides even line lay with all types of line
- Everlast™ bail system for improved durability
- Lightweight graphite rotor



NanoShield creates a protective exoskeleton which is up to 300% stronger than graphite. It also reduces the weight by up to 50% when compared to similar aluminum components.

MODEL #	SAP #	MONO CAPACITY	BRAID CAPACITY	MAX DRAG	GEAR RATIO	INCHES PER TURN	WEIGHT	BEARINGS	HAND RETRIEVE
REVO INS30	1265436 Box	10 lb/140 yd	10 lb/180 yd	12 lb	5.8:1	33	8.9 oz	8	Left/Right
REVO INS40	1265437 Box	12 lb/180 yd	14 lb/210 yd	18 lb	5.8:1	33	10.2 oz	8	Left/Right



CUTTING EDGE DESIGN WITH ADVANCED PERFORMANCE

The Revo SX takes cutting edge design to the next level by utilizing ultra lightweight C6 Carbon body that provides the strength needed, without the added weight of aluminium. The one piece gear box design further reduces weight and ensures exceptional gear feel and durability.

- 8 stainless steel HPCR™ bearings + 1 roller bearing provides increased corrosion protection
- One piece gear box design allows for more precise gear alignment and smoother operation
- C6 carbon body provides significant weight reduction without sacrificing strength and durability
- Machined aluminum braid ready spool allows braid to be tied directly to the spool without any slip
- Carbon Matrix™ hybrid drag system for super smooth reliable drag performance
- Flat EVA knob provides greater comfort and durability
- Slow Oscillation provides even line lay with all types of line
- X-Craftic™ alloy frame for increased corrosion resistance
- Everlast™ bail system for improved durability
- Stainless steel main shaft and components for improved corrosion resistance



MODEL #	SAP #	MONO CAPACITY	BRAID CAPACITY	MAX DRAG	GEAR RATIO	INCHES PER TURN	WEIGHT	BEARINGS	HAND RETRIEVE
REVO SX10	1265432 Box	4 lb/110 yd	6 lb/125yd	9 lb	5.2:1	25	7.4 oz	9	Left/Right
REVO SX20	1265433 Box	4 lb/135 yd	8 lb/125yd	12 lb	5.1:1	27	8.3 oz	9	Left/Right
REVO SX30	1265434 Box	6 lb/125 yd	10 lb/125yd	12 lb	5.8:1	33	8.9 oz	9	Left/Right
REVO SX40	1265435 Box	8 lb/125 yd	14 lb/125yd	18 lb	5.8:1	33	10.2 oz	9	Left/Right

THE NEXT GENERATION OF SPINNING REEL DESIGN

The Revo S provides smooth performance in a distinctive design that incorporates a Carbon Matrix™ hybrid drag system and our highest grade HPCR™ (High Performance Corrosion Resistant) bearings. The braid ready spool design allows braid to be tied directly to the spool without the use of a mono backing.

- 6 stainless steel HPCR™ bearings + 1 roller bearing provides increased corrosion protection
- One piece gear box design allows for more precise gear alignment and smoother operation
- Machined aluminum braid ready spool allows braid to be tied directly to the spool without any slip
- Carbon Matrix™ hybrid drag system for super smooth reliable drag performance
- Slow Oscillation provides even line lay with all types of line
- X-Craft™ alloy frame for increased corrosion resistance
- Everlast™ bail system for improved durability
- Stainless steel main shaft and components for improved corrosion resistance
- Lightweight polymeric body and rotor



MODEL #	SAP #	MONO CAPACITY	BRAID CAPACITY	MAX DRAG	GEAR RATIO	INCHES PER TURN	WEIGHT	BEARINGS	HAND RETRIEVE
REVO S10	1275049 Box	6 lb/110 yd	6 lb/150yd	9 lb	5.2:1	25	7.4 oz	7	Left/Right
REVO S20	1275050 Box	8 lb/130 yd	8 lb/190 yd	12 lb	5.1:1	27	8.4 oz	7	Left/Right
REVO S30	1275051 Box	10 lb/140 yd	10 lb/180 yd	12 lb	5.8:1	33	9.0 oz	7	Left/Right
REVO S40	1275052 Box	12 lb/180 yd	14 lb/210 yd	18 lb	5.8:1	33	10.1 oz	7	Left/Right

THE PERFECT COMBINATION OF PERFORMANCE AND RELIABILITY

The Orra SX incorporates HPCR™ (High Performance Corrosion Resistant) bearings, X-Craftic™ alloy and a sealed Carbon Matrix™ drag system to yield performance that can only be precision engineered by Abu Garcia.

- 8 stainless steel HPCR™ bearings + 1 roller bearing provides increased corrosion protection
- One piece gear box design allows for more precise gear alignment for smoother operation
- Machined aluminum braid ready spool allows braid to be tied directly to the spool without any slip
- Carbon Matrix™ drag system provides smooth, consistent drag pressure across the entire drag range
- Slow oscillation provides even line lay with all types of line
- X-Craftic™ alloy frame for increased corrosion resistance
- Everlast™ bail system for improved durability
- Stainless steel main shaft and components for improved corrosion resistance
- Aluminum spare monofilament spool
- Rotor brake design to stop early bail closure



MODEL #	SAP #	MONO CAPACITY	BRAID CAPACITY	MAX DRAG	GEAR RATIO	INCHES PER TURN	WEIGHT
ORRASX10	1236647 Box	4 lb/110 yd	6 lb/125 yd	10 lb	5.2:1	24.5	8.1 oz
ORRASX20	1236648 Box / 1293243 Clam	4 lb/ 135 yd	8 lb/125 yd	12 lb	5.8:1	31	9.1 oz
ORRASX30	1236659 Box / 1257842 Clam	6 lb/125 yd	10 lb/125 yd	12 lb	5.8:1	33	9.5 oz
ORRASX40	1236660 Box	8 lb/125 yd	14 lb/125 yd	18 lb	5.8:1	33	10.8 oz
ORRASX60	1236661 Box	12 lb/250 yd	20 lb/200 yd	20 lb	4.8:1	30	13.6 oz

SLEEK DESIGN, HIGH PERFORMANCE

Stunning design and a sleek look highlight the advancement in spinning reel technology. The Orra S incorporates a smooth performing sealed Hybrid Carbon Matrix™ drag system and includes a durable braid ready aluminum spool that eliminates the need for a mono backing.

- 6 stainless steel HPCR™ bearings + 1 roller bearing provides increased corrosion protection
- One piece gear box design allows for more precise gear alignment for smoother operation
- Machined aluminum braid ready spool allows braid to be tied directly to the spool without any slip
- Carbon Matrix™ hybrid drag system for super smooth reliable drag performance
- Slow oscillation provides even line lay with all types of line
- X-Craftic™ alloy frame for increased corrosion resistance
- Everlast™ bail system for improved durability
- Stainless steel main shaft and components for improved corrosion resistance



MODEL #	SAP #	MONO CAPACITY	BRAID CAPACITY	MAX DRAG	GEAR RATIO	INCHES PER TURN	WEIGHT
ORRAS10	1236662 Box	6 lb/110 yd	6 lb/150 yd	10 lb	5.2:1	24.5	7.9 oz
ORRAS20	1236663 Box / 1293242 Clam	8 lb/130 yd	8 lb/190 yd	12 lb	5.8:1	31	8.7 oz
ORRAS30	1236664 Box / 1239552 Clam	8 lb/175 yd	10 lb/180 yd	12 lb	5.8:1	33	9.2 oz
ORRAS40	1236665 Box	10 lb/210 yd	14 lb/210 yd	18 lb	5.8:1	33	10.2 oz

ADVANCED SPINNING PERFORMANCE AND RELIABILITY

The Cardinal reel made its debut in 1965 and has grown to be a hallmark for long lasting durability at a remarkable value. We've upgraded the design with modern styling and performance. The Cardinal STX, SX and S introduce a high performance era in the tradition of the Cardinal family.

- 6 ball bearings + 1 roller bearing provides smooth operation
- Lightweight graphite body and rotor
- Machined aluminum spool provides strength without adding excess weight
- Everlast™ bail system for improved durability
- Slow Oscillation provides even line lay with all types of line



MODEL #	SAP #	MONO CAPACITY	BRAID CAPACITY	MAX DRAG	GEAR RATIO	INCHES PER TURN	WEIGHT	BEARINGS	HAND RETRIEVE
CARD STX5	1265438 Box	4 lb/100 yd	4 lb/160 yd	6.4 lb	5.2:1	20.5	6.4 oz	7	Left/Right
CARD STX10	1265439 Box	6 lb/110 yd	6 lb/150 yd	6.5 lb	5.2:1	21	6.9 oz	7	Left/Right
CARD STX20	1265440 Box	8 lb/130 yd	8 lb/190 yd	14 lb	5.1:1	27	8.9 oz	7	Left/Right
CARD STX30	1265441 Box / 1278912 Clam	8 lb/175 yd	10 lb/180 yd	14 lb	5.1:1	29	9.2 oz	7	Left/Right
CARD STX40	1265442 Box	12 lb/180 yd	14 lb/210 yd	14 lb	5.1:1	29	9.7 oz	7	Left/Right

SMOOTH, HASSLE-FREE SPINNING IN STYLE

- 5 ball bearings + 1 roller bearing provides smooth operation
- Lightweight graphite body and rotor
- Machined aluminum spool provides strength without adding excess weight
- Everlast™ bail system for improved durability
- Slow Oscillation provides even line lay with all types of line



MODEL #	SAP #	MONO CAPACITY	BRAID CAPACITY	MAX DRAG	GEAR RATIO	INCHES PER TURN	WEIGHT
CARD SX5	1265443 Box / 1265444 Clam	4 lb/100 yd	4 lb/160 yd	6.4 lb	5.2:1	20.5	6.4 oz
CARD SX10	1265445 Box / 1265446 Clam	6 lb/110 yd	6 lb/150 yd	6.5 lb	5.2:1	21	6.9 oz
CARD SX20	1265447 Box / 1265448 Clam	8 lb/130 yd	8 lb/190 yd	14 lb	5.1:1	27	8.8 oz
CARD SX30	1265449 Box / 1265450 Clam	8 lb/175 yd	10 lb/180 yd	14 lb	5.1:1	29	9.2 oz
CARD SX40	1265451 Box / 1265452 Clam	12 lb/180 yd	14 lb/210 yd	14 lb	5.1:1	29	9.7 oz

OUTSTANDING VERSATILITY, DEPENDABILITY AND VALUE

- 3 ball bearings + 1 roller bearing provides smooth operation
- Lightweight graphite body and rotor
- Machined aluminum spool provides strength without adding excess weight
- Everlast™ bail system for improved durability
- Slow Oscillation provides even line lay with all types of line



MODEL #	SAP #	MONO CAPACITY	BRAID CAPACITY	MAX DRAG	GEAR RATIO	INCHES PER TURN	WEIGHT
CARD S5	1265453 Box / 1265454 Clam	4 lb/100 yd	4 lb/160 yd	6.4 lb	5.2:1	20.5	6.3 oz
CARD S10	1265455 Box / 1265456 Clam	6 lb/110 yd	6 lb/150 yd	6.5 lb	5.2:1	21	6.8 oz
CARD S20	1265457 Box / 1265458 Clam	8 lb/130 yd	8 lb/190 yd	14 lb	5.1:1	27	8.6 oz
CARD S30	1265459 Box / 1265460 Clam	8 lb/175 yd	10 lb/180 yd	14 lb	5.1:1	29	9.1 oz
CARD S40	1265461 Box / 1265462 Clam	12 lb/180 yd	14 lb/210 yd	14 lb	5.1:1	29	9.6 oz
CARD S60	1265463 Box / 1265464 Clam	14 lb/205 yd	20 lb/200 yd	20 lb	4.8:1	30	13.1 oz

ABUMATIC® 1276SLi

ENGINEERED FOR SUPERLINES IN AN ALL WATER PROTECTED PACKAGE

- 4 bearing Duragear™ drive
- Instant anti reverse
- Ultra-smooth spool drag system
- Titanium nitride front cone, rotor, and line guide
- Dual rotating swing-arm titanium nitride pick-up pin
- Fresh and saltwater ready



MODEL #	SAP #	MONO CAPACITY	MAX DRAG	GEAR RATIO	INCHES PER TURN	WEIGHT	BEARINGS	HAND RETRIEVE
1276SLi	1139311 Box	14 lb/100 yd	10 lb	3.6:1	22	10.2 oz	5	Left/Right

ABUMATIC® 170i

CLASSIC DEPENDABILITY WITH MODERN PERFORMANCE

- 3 bearing Duragear™ drive
- Instant anti reverse
- Ultra-smooth Carbon Matrix™ SYNCRO drag system
- Aluminum diecast and machined body and front cone
- Dual rotating swing-arm pick-up pins
- Oscillating far-cast spool with no-twist line system
- Easy one-touch casting
- Fresh and saltwater ready



MODEL #	SAP #	MONO CAPACITY	MAX DRAG	GEAR RATIO	INCHES PER TURN	WEIGHT	BEARINGS	HAND RETRIEVE
170i	1139309 Box	12 lb/140 yd	10 lb	3.9:1	25	11.8 oz	4	Right

ABUMATIC® 576i

A PERFORMANCE-BASED SPINCAST REEL DESIGNED FOR DURABILITY

- Duragear™ drive
- Instant anti reverse
- Ultra-smooth spool drag system
- Titanium nitride line guide
- Dual rotating swing-arm pick-up pins



MODEL #	SAP #	MONO CAPACITY	MAX DRAG	GEAR RATIO	INCHES PER TURN	WEIGHT	BEARINGS	HAND RETRIEVE
576i	1139305 Box / 1139306 Clam	8 lb/110 yd	8 lb	3.6:1	19	9.4 oz	4	Left/Right

ABUMATIC® 476i & 276i

A PERFORMANCE-BASED SPINCAST REEL DESIGNED FOR DURABILITY

- Duragear™ drive
- Instant anti reverse
- Ultra-smooth spool drag system
- Titanium nitride line guide
- Dual rotating swing-arm pick-up pins



MODEL #	SAP #	MONO CAPACITY	MAX DRAG	GEAR RATIO	INCHES PER TURN	WEIGHT	BEARINGS	HAND RETRIEVE
476i	1139303 Box / 1139304 Clam	12 lb/100 yd	10 lb	3.6:1	22	10.1 oz	2	Left/Right
276i	1139301 Box / 1139302 Clam	8 lb/110 yd	8 lb	3.6:1	19	9.2 oz	2	Left/Right

ABUMATIC® 276Ui

A PERFORMANCE-BASED SPINCAST REEL DESIGNED FOR DURABILITY

- Duragear™ drive
- Instant anti reverse
- Ultra-smooth spool drag system
- Titanium nitride line guide
- Dual rotating swing-arm pick-up pins



MODEL #	SAP #	MONO CAPACITY	MAX DRAG	GEAR RATIO	INCHES PER TURN	WEIGHT	BEARINGS	HAND RETRIEVE
276Ui	1139307 Box / 1139308 Clam	8 lb/110 yd	8 lb	3.6:1	19	10.1 oz	2	Left/Right

ABUMATIC® 276i COMBO

THIS PERFORMANCE-BASED SPINCAST COMBO WAS BUILT WITH DURABILITY AND LONG LIFE IN MIND

- Ultra-smooth spool drag system
- Duragear™ drive with instant anti reverse
- Dual rotating swing-arm pick-up pins
- Graphite composite rod for increased strength and durability



MODEL #	SAP #	ACTIONS	LENGTH	PIECES	REEL	CAPACITY	GEAR RATIO	BEARINGS
276i/602ML	1139957	ML	6'0"	2	276i	8 lb/110 yd	3.6:1	2



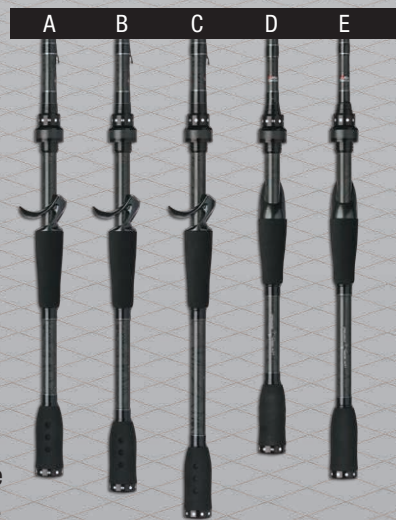
THE NEXT GENERATION OF LIGHTWEIGHT DESIGN & SENSITIVITY

The advancement of cutting edge, ultra-lightweight technology is built into the core of the Villain rod. By using our unique low resin content graphite, the Villain takes on a jaw dropping balanced and lightweight feel.

The combination of the C6 total exposure reel seat and 40 Ton graphite, provide optimum sensitivity by allowing vibrations to be transmitted directly to the angler.

THE ABU ADVANTAGE:

- 40 Ton graphite for a lightweight balanced design and increased sensitivity
- Low Resin Content technology provides a lighter rod, without sacrificing durability
- Titanium alloy guides with Titanium inserts allow for a super lightweight guide giving the ultimate in rod performance
- C6 total exposure reel seat gives complete contact to the rod for the ultimate sensitivity
- High density EVA gives greater sensitivity and durability
- Carbon wrapped guides reduces weight
- Texas rigged hook keeper for all bait applications
- Split grip design
- **Micro-Guide System** delivers a rod that has superior balance and increased sensitivity. The improved balance allows the rod to be fished all day without fatigue, while the increased sensitivity yields superior bite detection.

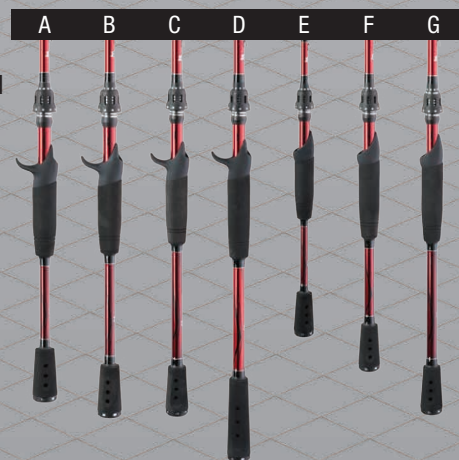


EXCEPTIONAL SENSITIVITY IN A LIGHTWEIGHT, BALANCED PACKAGE

Lightweight performance engineered for today's serious angler. Constructed from 36 Ton graphite with Nano Technology, the Veracity series of rods delivers the perfect combination of sensitivity and impact resistance. The addition of titanium alloy micro guides promotes a balanced feel and improved sensitivity for all-day comfort and performance.

THE ABU ADVANTAGE:

- 36 Ton graphite with NanoTechnology for decreased weight and increased impact resistance
- Titanium alloy guides with Titanium inserts allow for a super lightweight guide giving the ultimate in rod performance
- Abu designed extreme exposure reel seat for increased blank contact and sensitivity
- High density EVA gives greater sensitivity and durability
- Texas rigged hook keeper for all bait applications
- **Micro-Guide System** delivers a rod that has superior balance and increased sensitivity. The improved balance allows the rod to be fished all day without fatigue, while the increased sensitivity yields superior bite detection.
- **Winch Series** has been specially designed for crankbait fishing. A more parabolic action allows fish to be able to take the bait and not throw the bait as easily once hooked.





	MODEL # - PR	SAP #	LENGTH	PIECES	ACTION	POWER	LURE WEIGHT	LINE WEIGHT	ROD WEIGHT	HANDLES
MIRCO-GUIDE SYSTEM	VLCM69-6	1278902	6'9"	1	F	MH	1/4-1 oz	12-20 lb	4.2 oz	B
	VLCM71-5	1278903	7'1"	1	M	M	1/4-5/8 oz	8-17 lb	4.4 oz	B
	VLCM71-6	1278904	7'1"	1	F	MH	1/4-1 oz	12-20 lb	5.3 oz	B
	VLCM73-7	1278905	7'3"	1	F	H	3/8-1 1/2 oz	14-30 lb	5.5 oz	B
	VLSM69-4	1278906	6'9"	1	F	ML	1/8-1/2 oz	6-10 lb	4.6 oz	E
	VLSM610-5	1278907	6'10"	1	MF	M	3/16-5/8 oz	6-12 lb	4.8 oz	E
	VLSM71-5	1278908	7'1"	1	F	M	3/16-5/8 oz	6-12 lb	5.0 oz	E
CASTING	VLC66-5	1237087	6'6"	1	F	M	1/4-5/8 oz	8-17 lb	4.1 oz	A
	VLC66-6	1237088	6'6"	1	F	MH	1/4-1 oz	12-20 lb	4.3 oz	A
	VLC69-4	1237089	6'9"	1	MF	ML	1/8-1/2 oz	6-10 lb	4.1 oz	B
	VLC69-6	1237090	6'9"	1	F	MH	1/4-1 oz	12-20 lb	4.3 oz	B
	VLC71-5	1237091	7'1"	1	M	M	1/4-5/8 oz	8-17 lb	4.7 oz	B
	VLC71-6	1237092	7'1"	1	F	MH	1/4-1 oz	12-20 lb	5.3 oz	B
	VLC73-7	1237093	7'3"	1	F	H	3/8-1 1/2 oz	14-30 lb	5.5 oz	B
	VLC76-6	1237094	7'6"	1	F	MH	3/8-1 1/4 oz	12-25 lb	5.5 oz	C
	VLC80-7	1237095	8'0"	1	MF	H	3/8-1 1/2 oz	14-30 lb	6.3 oz	C
SPINNING	VLS66-6	1237096	6'6"	1	F	MH	1/4-3/4 oz	8-14 lb	4.7 oz	D
	VLS69-4	1237097	6'9"	1	F	ML	1/8-1/2 oz	6-10 lb	4.6 oz	E
	VLS610-5	1237098	6'10"	1	MF	M	3/16-5/8 oz	6-12 lb	4.8 oz	E
	VLS71-5	1237099	7'1"	1	F	M	3/16-5/8 oz	6-12 lb	5.0 oz	E
	VLS71-6	1237100	7'1"	1	F	MH	1/4-3/4 oz	8-14 lb	5.4 oz	E

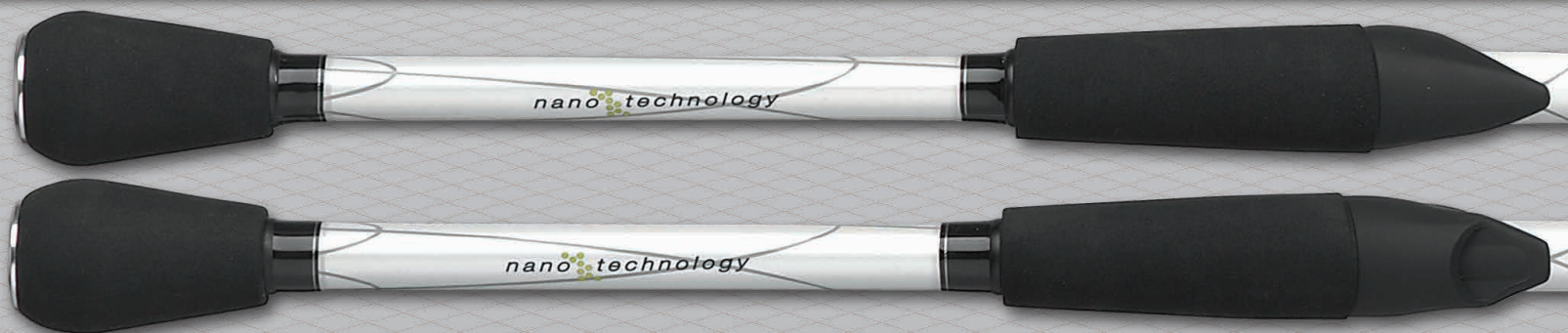


NEW

Use your mobile device to learn more
Mobile app at www.abugarcia.com/scan



	MODEL # - PR	SAP #	LENGTH	PIECES	ACTION	POWER	LURE WEIGHT	LINE WEIGHT	ROD WEIGHT	HANDLES
MIRCO-GUIDE SYSTEM CASTING	VERC66-6	1292743	6'6"	1	MF	MH	1/4-1 oz	12-20 lb	3.9 oz	A
	VERC69-6	1292744	6'9"	1	F	MH	1/4-1 oz	12-20 lb	4.2 oz	B
	VERC70-5	1292745	7'0"	1	MF	M	1/4-5/8 oz	8-17 lb	3.8 oz	B
	VERC70-6	1292747	7'0"	1	F	MH	1/4-1 oz	12-20 lb	4.4 oz	B
	VERC73-6	1292748	7'3"	1	F	MH	1/4-1 oz	12-20 lb	4.5 oz	B
	VERC76-6	1292749	7'6"	1	F	MH	3/8-1 1/2 oz	12-25 lb	5.0 oz	C
	VERC76-7	1292751	7'6"	1	F	H	1/2-2 oz	14-30 lb	4.8 oz	C
	VERC79-7	1292752	7'9"	1	F	H	5/8-3 oz	14-30 lb	5.7 oz	D
MIRCO-GUIDE SYSTEM SPINNING	VERS69-4	1292754	6'9"	1	F	ML	1/8-1/2 oz	6-10 lb	3.5 oz	E
	VERS70-5	1292755	7'0"	1	F	M	3/16-5/8 oz	8-14 lb	3.7 oz	F
	VERS70-6	1292757	7'0"	1	F	MH	1/4-3/4 oz	8-14 lb	4.3 oz	F
	VERS76-5	1292758	7'6"	1	F	M	3/16-5/8 oz	6-12 lb	4.1 oz	G
WINCH SERIES	VERCW70-5	1292746	7'0"	1	M	M	1/4-5/8 oz	8-17 lb	3.8 oz	B
	VERCW76-6	1292750	7'6"	1	M	MH	1/4-1 oz	12-20 lb	4.7 oz	C
	VERCW711-7	1292753	7'11"	1	F	H	3/8-1 1/4 oz	12-25 lb	5.7 oz	D
	VERCW711-8	1313144	7'11"	1	M	XH	3/4-2 1/2 oz	14-30 lb	3.8 oz	D
	VERSW70-5	1292756	7'0"	1	M	M	3/16-5/8 oz	8-14 lb	3.7 oz	F



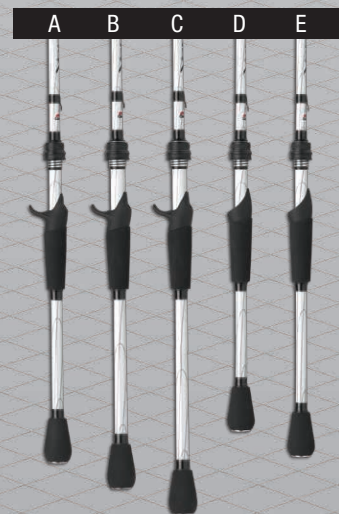
THE TECHNOLOGY IS NANO, THE EFFECT IS MACRO

Lightweight is all the rage in rod design, yet many designers ignore the most important factors of balance and strength. The Veritas series of rods provide extreme lightweight design and focus solely on the balance and compression strength anglers must have.

Nano Technology manipulates graphite on an atomic level for 2.5 times the impact resistance of standard graphite rods. Now you can count on your rod to stand up to nicks and dings that make other rods snap under pressure.

THE ABU ADVANTAGE:

- 30 Ton graphite with Nano Technology
- Titanium alloy guides with Zirconium inserts allow for a lightweight balanced rod
- Abu designed extreme exposure reel seat for increased rod contact and sensitivity
- One piece aluminum screw down hood creates a secure connection
- High density EVA gives greater sensitivity and durability
- Texas rigged hook keeper for all bait applications
- Actions designed for fishing crankbaits
- **Winch Series** models designed to match with Abu Garcia Revo & Orre Winch crank bait reels
- **Micro-Guide System** provides improved balance and sensitivity
- **Schooling Rig Series** as been designed to fish multi bait rigs. The extra length of the rod combined with a fast tip and stiff middle and lower sections allow for greater castability as well as maximum hook setting power.



VOLATILE™



INSHORE ACTIONS PRECISION ENGINEERED WITH NANOTECHNOLOGY

Whether you are targeting inshore species like redfish, trout and stripers, or larger freshwater species like muskie, the same high performance NanoTechnology utilized in the Veritas series is now available in actions perfectly suited for these applications.

Pair the new Volatile with the Revo Inshore low profile and spinning reels, or Revo Toro NaCl for the ultimate inshore system.

THE ABU ADVANTAGE:

- 30 Ton graphite with NanoTechnology for decreased weight and increased impact resistance
- High density EVA gives greater sensitivity and durability
- Texas rigged hook keeper for all bait applications
- Stainless steel guides with Zirconium inserts
- Fuji® IPS reel seat (spinning) for greater comfort
- Fuji® ECS reel seat (casting) for greater comfort





	MODEL # - PR	SAP #	LENGTH	PIECES	ACTION	POWER	LURE WEIGHT	LINE WEIGHT	ROD WEIGHT	HANDLES
SCHOOLING RIG	VRC79-7	1283548	7'9"	1	F	H	5/8-3 oz	12-25 lb	5.7 oz	C
	VRCM66-5	1253047	6'6"	1	F	M	1/4-5/8 oz	8-17 lb	3.9 oz	A
MIRCO-GUIDE SYSTEM	VRCM66-6	1253048	6'6"	1	MF	MH	1/4-1 oz	12-20 lb	4.0 oz	A
	VRCM69-6	1253049	6'9"	1	F	MH	1/4-1 oz	12-20 lb	4.2 oz	B
	VRCM70-5	1253050	7'0"	1	F	M	1/4-5/8 oz	8-17 lb	4.0 oz	B
	VRCM70-6	1253051	7'0"	1	F	MH	1/4-1 oz	12-20 lb	4.6 oz	B
WINCH SERIES	VRCW70-5	1237122	7'0"	1	M	M	3/8-3/4 oz	8-17 lb	3.8 oz	B
	VRCW76-6	1237123	7'6"	1	M	MH	1/2-1 3/8 oz	10-20 lb	3.8 oz	C
CASTING	VRC66-5	1205845	6'6"	1	F	M	1/4-5/8 oz	8-17 lb	3.9 oz	A
	VRC662-5	1211126	6'6"	2	F	M	1/4-5/8 oz	8-17 lb	3.9 oz	A
	VRC66-6	1205846	6'6"	1	MF	MH	1/4-1 oz	12-20 lb	4.2 oz	A
	VRC69-6	1205847	6'9"	1	F	MH	1/4-1 oz	12-20 lb	4.4 oz	B
	VRC692-6	1211127	6'9"	2	F	MH	1/4-1 oz	12-20 lb	4.4 oz	B
	VRC70-5	1205848	7'0"	1	F	M	1/4-5/8 oz	8-17 lb	4.2 oz	B
	VRC70-6	1205849	7'0"	1	F	MH	1/4-1 oz	12-20 lb	4.8 oz	B
	VRC70-7	1205850	7'0"	1	XF	H	3/8-1 1/2 oz	12-25 lb	4.8 oz	B
	VRC73-6	1205851	7'3"	1	M	MH	1/4-1 oz	12-20 lb	5.4 oz	B
	VRC76-6	1205852	7'6"	1	F	MH	3/8-1 1/4 oz	12-25 lb	5.1 oz	C
	VRC711-7	1237124	7'11"	1	MF	H	3/8-1 1/2 oz	12-25 lb	6.0 oz	C
SPINNING	VRS66-5	1205853	6'6"	1	F	M	1/8-1/2 oz	6-12 lb	5.0 oz	D
	VRS662-5	1211128	6'6"	2	F	M	1/8-1/2 oz	6-12 lb	5.0 oz	D
	VRS66-6	1205854	6'6"	1	F	MH	1/4-3/4 oz	8-14 lb	4.2 oz	D
	VRS662-6	1211129	6'6"	2	F	MH	1/4-3/4 oz	8-14 lb	4.2 oz	D
	VRS69-4	1205855	6'9"	1	F	ML	1/8-1/2 oz	6-10 lb	3.7 oz	E
	VRS70-5	1205856	7'0"	1	XF	M	3/16-5/8 oz	6-12 lb	4.4 oz	E
	VRS702-5	1211130	7'0"	2	XF	M	3/16-5/8 oz	6-12 lb	4.4 oz	E
	VRS70-6	1205857	7'0"	1	F	MH	1/4-3/4 oz	8-14 lb	4.5 oz	E



	MODEL # - PR	SAP #	LENGTH	PIECES	ACTION	POWER	LURE WEIGHT	LINE WEIGHT	ROD WEIGHT	HANDLES
CASTING	VOLC69-4	1265466	6'9"	1	XF	ML	1/16-3/8 oz	6-12 lb	4.3 oz	A
	VOLC70-5	1265467	7'0"	1	F	M	1/4-5/8 oz	8-17 lb	5.1 oz	B
	VOLC70-6	1265465	7'0"	1	F	MH	1/2-1 oz	12-20 lb	5.7 oz	C
	VOLC72-5	1265468	7'2"	1	M	M	3/8-3/4 oz	8-17 lb	4.9 oz	B
	VOLC79-5	1265469	7'9"	1	F	M	3/8-2 oz	10-20 lb	6.8 oz	D
	VOLC80-6	1276555	8'0"	1	F	MH	1/2-3 oz	12-25 lb	8.4 oz	D
	VOLC80-7	1265470	8'0"	1	F	H	3/4-4oz	15-30 lb	8.8 oz	D
SPINNING	VOLS70-4	1265471	7'0"	1	F	ML	1/16-3/8 oz	6-12 lb	4.6 oz	E
	VOLS70-5	1265472	7'0"	1	F	M	1/4-5/8 oz	8-17 lb	4.7 oz	F
	VOLS70-6	1265473	7'0"	1	F	MH	3/8-1 oz	10-20 lb	5.3 oz	F
	VOLS76-5	1265474	7'6"	1	F	M	1/4-5/8 oz	8-17 lb	5.0 oz	F
MUSKIE ACTIONS	VOLCMU79-6	1286917	7'9"	1	F	MH	1/4-1 oz	25-50 lb	7.2 oz	D
	VOLCMU80-6	1286918	8'0"	1	F	MH	2-6 oz	30-60 lb	8.9 oz	D
	VOLCMU80-7	1287059	8'0"	1	F	H	4-10 oz	40-60 lb	9.0 oz	D
	VOLCMU86-8	1287060	8'6"	1	F	XH	6-16 oz	50-100 lb	10.4 oz	D

NEW



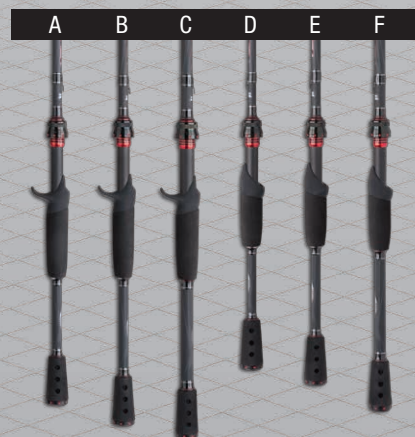
INTRACARBON TECHNOLOGY, ADVANCED PERFORMANCE

The next generation of Vendetta incorporates new IntraCarbon™ Technology to create a layer of multi-directional carbon fibers that provides a lightweight protective barrier on the rod blank without adding weight.

The aggressive design of the Vendetta is matched by the balanced feel, creating the perfect harmony between rod and reel, allowing for greater sensitivity and control.

THE ABU ADVANTAGE:

- 30 Ton graphite for a lightweight balanced design
- One piece aluminum screw down hood creates a secure connection
- High density EVA gives greater sensitivity and durability
- Texas rigged hook keeper for all bait applications
- Stainless steel guides with Zirconium inserts
- Abu designed extreme exposure reel seat for increased blank contact and sensitivity
- IntraCarbon™ technology provides a lightweight barrier to improve durability without adding weight



VENDETTA™ LINECOUNTER



THE PERFECT COMPLEMENT TO THE ALPHAMAR LINECOUNTER SYNCRO REELS

Designed with the trolling angler in mind, the Vendetta Linecounter series of rods matches perfectly with the Alphamar Linecounter Syncro family of reels. With actions specifically engineered for the salmon trolling crowd, the Vendetta Linecounter family offers incredible performance and design.

THE ABU ADVANTAGE:

- 30 Ton graphite for a lightweight balanced design
- Stainless steel guides with Zirconium inserts
- Actions designed to suit linecounter reels
- Some models are telescopic for better storage
- High density EVA gives greater sensitivity and durability





	MODEL # - PR	SAP #	LENGTH	PIECES	ACTION	POWER	LURE WEIGHT	LINE WEIGHT	ROD WEIGHT	HANDLES
CASTING	VNTC63-5	1265475	6'3"	1	F	M	1/4-5/8 oz	8-17 lb	5.1 oz	A
	VNTC66-5	1265476	6'6"	1	F	M	1/4-5/8 oz	8-17 lb	5.1 oz	B
	VNTC66-6	1265477	6'6"	1	XF	MH	1/4-1 oz	12-20 lb	5.1 oz	B
	VNTC662-6	1265478	6'6"	2	XF	MH	1/4-1 oz	12-20 lb	5.1 oz	B
	VNTC69-6	1265479	6'9"	1	F	MH	1/4-1 oz	12-20 lb	5.4 oz	C
	VNTC70-5	1265480	7'0"	1	MF	M	1/4-5/8 oz	8-17 lb	5.7 oz	C
	VNTC70-6	1265481	7'0"	1	F	MH	1/4-1 oz	12-20 lb	5.7 oz	C
	VNTC73-6	1265482	7'3"	1	XF	MH	1/4-1 oz	12-20 lb	5.9 oz	C
	VNTC73-7	1265483	7'3"	1	M	H	3/8-1 1/2 oz	14-30 lb	6.4 oz	C
	VNTC76-6	1265484	7'6"	1	F	MH	3/8-1 1/4 oz	12-25 lb	6.3 oz	C
	VNTC76-7	1265485	7'6"	1	F	H	3/8-1 1/2 oz	14-30 lb	7.2 oz	C
SPINNING	VNTS63-5	1265486	6'3"	1	F	M	1/8-1/2 oz	6-12 lb	4.5 oz	D
	VNTS66-5	1265487	6'6"	1	MF	M	1/8-1/2 oz	6-12 lb	5.4 oz	E
	VNTS662-5	1265488	6'6"	2	MF	M	1/8-1/2 oz	6-12 lb	5.4 oz	E
	VNTS66-6	1265489	6'6"	1	F	MH	1/4-3/4 oz	8-14 lb	5.0 oz	E
	VNTS662-6	1265490	6'6"	2	F	MH	1/4-3/4 oz	8-14 lb	5.0 oz	E
	VNTS69-4	1265491	6'9"	1	XF	ML	1/8-1/2 oz	6-10 lb	4.3 oz	E
	VNTS692-4	1265492	6'9"	2	XF	ML	1/8-1/2 oz	6-10 lb	4.3 oz	E
	VNTS70-5	1265493	7'0"	1	F	M	3/16-5/8 oz	6-12 lb	6.1 oz	F
	VNTS702-5	1265494	7'0"	2	F	M	3/16-5/8 oz	6-12 lb	6.1 oz	F
	VNTS70-6	1265495	7'0"	1	F	MH	1/4-3/4 oz	8-14 lb	6.0 oz	F
	VNTS74-5	1265496	7'4"	1	F	M	3/16-5/8 oz	8-14 lb	5.9 oz	F



NEW

Use your mobile device to learn more
Mobile app at www.abugarcia.com/scan



	MODEL # - PR	SAP #	LENGTH	PIECES	ACTION	POWER	LURE WEIGHT	LINE WEIGHT	ROD WEIGHT	HANDLES
	VNTC710T-5	1292775	7'10"	1	MF	M	1/4-1 oz	10-20 lb	6.8 oz	A
	VNTC86T-5	1292776	8'6"	1	MF	M	1/4-1 oz	10-20 lb	7.2 oz	A
	VNTC86T-6	1292777	8'6"	1	MF	MH	1/2-1 1/2 oz	12-25 lb	7.0 oz	A
	VNTC962-5	1292778	9'6"	2	MF	M	1/4-1 oz	10-20 lb	7.0 oz	A
	VNTC962-6	1292779	9'6"	2	MF	MH	1/2-1 1/2 oz	12-25 lb	7.2 oz	A
	VNTC1062-5	1292780	10'6"	2	MF	M	1/4-1 oz	10-20 lb	8.2 oz	B
	VNTC1062-6	1292781	10'6"	2	MF	MH	1/2-1 1/2 oz	12-25 lb	8.3 oz	B



OPTIMUM PERFORMANCE, GREAT VALUE

The Vengeance series of rods delivers a balance of performance driven function and design. With its 24 ton graphite blank, split grip handle and advanced components, the Vengeance series gives anglers excellent performance at an economical price.

THE ABU ADVANTAGE:

- 24 Ton graphite construction for a lightweight and balanced design
- High density EVA handles are more durable and comfortable
- Soft-touch sea guide reel seats for increased comfort
- Zirconium coated guides are perfect for braided line usage
- Texas-rigged hook keeper for all bait applications



7000i COMBO

AS BIG ON PERFORMANCE AS THEY ARE ON DURABILITY

- Six washer drag system reel with precision brass gears
- Corrosion resistant instant anti reverse reel with a manual clutch
- E-Glass rod blank with EVA handle and aluminum oxide guides
- 8' medium-heavy rod has Corkalon™ handle and stainless steel guides



MODEL #	SAP #	ACTIONS	LENGTH	PIECES	REEL	CAPACITY	GEAR RATIO	BEARINGS
7000i/701MH	1123095	MH	7'0"	1	7000i	17 lb/325 yd	4.1:1	1
7000i/802MH	1123096	MH	8'0"	2	7000i	17 lb/325 yd	4.1:1	1



	MODEL # - PR	SAP #	LENGTH	PIECES	ACTION	POWER	LURE WEIGHT	LINE WEIGHT	ROD WEIGHT	HANDLES
CASTING	VNGC66-5	1237109	6'6"	1	MF	M	1/4-5/8 oz	8-17 lb	4.4 oz	A
	VNGC662-5	1237118	6'6"	2	MF	M	1/4-5/8 oz	8-17 lb	4.5 oz	A
	VNGC66-6	1237110	6'6"	1	F	MH	1/4-1 oz	12-20 lb	4.9 oz	A
	VNGC70-5	1237112	7'0"	1	MF	M	1/4-5/8 oz	8-17 lb	5.0 oz	B
	VNGC70-6	1237113	7'0"	1	F	MH	1/4-1 oz	12-20 lb	5.5 oz	B
	VNGC76-7	1237116	7'6"	1	XF	H	3/8-1 1/2 oz	14-30 lb	6.3 oz	B
SPINNING	VNGS56-3	1237101	5'6"	1	MF	L	1/16-5/16 oz	2-10 lb	3.2 oz	C
	VNGS66-4	1237103	6'6"	1	F	ML	1/8-1/2 oz	6-10 lb	4.6 oz	D
	VNGS662-4	1237121	6'6"	2	F	ML	1/8-1/2 oz	6-10 lb	4.4 oz	D
	VNGS66-5	1237104	6'6"	1	MF	M	1/8-1/2 oz	6-12 lb	4.8 oz	D
	VNGS662-5	1237120	6'6"	2	MF	M	1/8-1/2 oz	6-12 lb	4.9 oz	D
	VNGS66-6	1237105	6'6"	1	F	MH	1/4-3/4 oz	8-14 lb	5.0 oz	D
	VNGS662-6	1237119	6'6"	2	F	MH	1/4-3/4 oz	8-14 lb	5.1 oz	D
	VNGS70-5	1237106	7'0"	1	F	M	3/16-5/8 oz	6-12 lb	5.0 oz	E
	VNGS702-5	1237117	7'0"	2	F	M	3/16-5/8 oz	6-12 lb	4.9 oz	E
	VNGS70-6	1237107	7'0"	1	F	MH	1/4-3/4 oz	8-14 lb	5.0 oz	E

AMBASSADEUR® S COMBO

PERFORMANCE AND RELIABILITY IN A VALUE-DRIVEN PACKAGE

- 2 stainless steel ball bearings provide smooth operation
- Smooth and consistent multi disc drag system
- Compact bent handle and star provide a more ergonomic design
- 4 pin centrifugal brake gives consistent brake pressure throughout the cast
- Synchronized level wind system improves line lay and castability
- 24 Ton graphite for a lightweight balanced design
- Texas rigged hook keeper for all bait applications
- Light weight cork grips



NEW

MODEL #	SAP #	ACTIONS	LENGTH	PIECES	REEL	CAPACITY	GEAR RATIO	BEARINGS
AMBS-5500/661M	1292763	M	6'6"	1	AMBS-5500	14 lb/230 yd	5.1:1	2
AMBS-6500/701MH	1292764	MH	7'0"	1	AMBS-6500	17 lb/255 yd	5.1:1	2
AMBS-6500/862M	1292765	M	8'6"	2	AMBS-6500	17 lb/255 yd	5.1:1	2
AMBS-6500/862MH	1292766	MH	8'6"	2	AMBS-6500	17 lb/255 yd	5.1:1	2

ORRA™ SX COMBO

REFINED STYLE AND PERFORMANCE

- 7 stainless steel ball bearings + 1 roller bearing provides smooth operation
- Lightweight aluminum frame
- Power Disk™ drag system gives smooth drag performance
- Duragear™ brass gear for extended gear life
- MagTrax™ brake system gives consistent brake pressure throughout the cast
- 24 Ton graphite for a lightweight balanced design
- High density EVA gives greater sensitivity and durability
- Texas rigged hook keeper for all bait applications

- **Micro-Guide System** delivers a rod that has superior balance and increased sensitivity. The improved balance allows the rod to be fished all day without fatigue, while the increased sensitivity yields superior bite detection.

NEW

MODEL #	SAP #	ACTIONS	LENGTH	PIECES	REEL	CAPACITY	GEAR RATIO	BEARINGS
ORRA2SX/661M	1292760	M	6'6"	1	ORRA2SX	12 lb/145 yd	6.4:1	8
ORRA2SX/701MH	1292761	MH	7'0"	1	ORRA2SX	12 lb/145 yd	6.4:1	8

ORRA™ WINCH COMBO

DESIGNED FOR THE CRANKBAIT ANGLER

- 7 stainless steel ball bearings + 1 roller bearing provides smooth operation
- Lightweight aluminum frame
- Power Disk™ drag system gives smooth drag performance
- Duragear™ brass gear for extended gear life
- MagTrax™ brake system gives consistent brake pressure throughout the cast
- 24 Ton graphite for a lightweight balanced design
- High density EVA gives greater sensitivity and durability
- Texas rigged hook keeper for all bait applications

- **Micro-Guide System** delivers a rod that has superior balance and increased sensitivity. The improved balance allows the rod to be fished all day without fatigue, while the increased sensitivity yields superior bite detection
- **Winch Series** has been specially designed for crankbait fishing. A more parabolic action allows fish to be able to take the bait and not throw the bait as easily once hooked.

NEW

MODEL #	SAP #	ACTIONS	LENGTH	PIECES	REEL	CAPACITY	GEAR RATIO	BEARINGS
ORRA2WNCH/701M	1292762	M	7'0"	1	ORRA2WINCH	12 lb/180 yd	5.4:1	8

MAXIMUM PERFORMANCE, PROFESSIONAL RESULTS

- 24 Ton graphite for a lightweight balanced design
- Stainless steel guides with Zirconium coated inserts
- Abu designed extreme exposure reel seat for increased rod contact and sensitivity
- 7 stainless steel ball bearings + 1 roller bearing provides smooth operation
- Power Disk™ drag system for smooth drag performance



MODEL #	SAP #	ACTIONS	LENGTH	PIECES	REEL	CAPACITY	GEAR RATIO	BEARINGS
PMAX2/661M	1237080	M	6'6"	1	PMAX2	12 lb/145 yd	7.1:1	8
PMAX2/701MH	1237082	MH	7'0"	1	PMAX2	12 lb/145 yd	7.1:1	8

SILVER MAX™ COMBO
PERFORMANCE AND TOUGHNESS IN A LOW PROFILE REEL

- 24 Ton graphite for a lightweight balanced design
- Stainless steel guides with Zirconium coated inserts
- Abu designed extreme exposure reel seat for increased rod contact and sensitivity
- 5 stainless steel ball bearings + 1 roller bearing provides smooth operation



MODEL #	SAP #	ACTIONS	LENGTH	PIECES	REEL	CAPACITY	GEAR RATIO	BEARINGS
SMAX2/661M	1237083	M	6'6"	1	SMAX2	12 lb/145 yd	6.4:1	6
SMAX2/701MH	1237084	MH	7'0"	1	SMAX2	12 lb/145 yd	6.4:1	6

BLACK MAX™ COMBO
MAXIMUM PERFORMANCE AND VALUE

- 24 Ton graphite for a lightweight balanced design
- Stainless steel guides with Zirconium coated inserts
- Abu designed extreme exposure reel seat for increased rod contact and sensitivity
- 5 stainless steel ball bearings + 1 roller bearing provides smooth operation



MODEL #	SAP #	ACTIONS	LENGTH	PIECES	REEL	CAPACITY	GEAR RATIO	BEARINGS
BMAX2/661M	1237085	M	6'6"	1	BMAX2	12 lb/145 yd	6.4:1	5
BMAX2/701MH	1237086	MH	7'0"	1	BMAX2	12 lb/145 yd	6.4:1	5

ORRA™ S COMBO



SLEEK DESIGN, HIGH PERFORMANCE

- 24 Ton graphite for a lightweight balanced design
- Stainless steel guides with Zirconium coated inserts
- Abu designed extreme exposure reel seat for increased blank contact and sensitivity
- 6 stainless steel HPCR bearings + 1 roller bearing provides increased corrosion protection
- One piece gear box design allows for more precise gear alignment and smoother operation

MODEL #	SAP #	ACTIONS	LENGTH	PIECES	REEL	CAPACITY	GEAR RATIO	BEARINGS
ORRA20S/661M	1239107	M	6'6"	1	ORRAS20	8 lb/130 yd	5.8:1	7
ORRA30S/701M	1239108	M	7'0"	1	ORRAS30	8 lb/175 yd	5.8:1	7

CARDINAL® STX COMBO

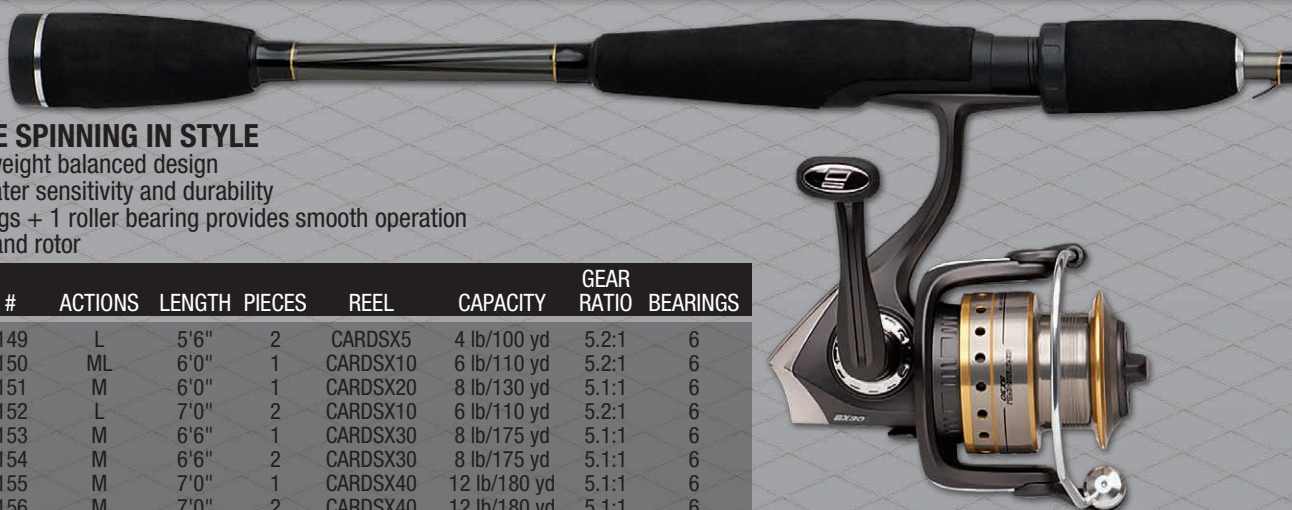


ADVANCED SPINNING PERFORMANCE AND RELIABILITY

- 24 Ton graphite for a lightweight balanced design
- High density EVA gives greater sensitivity and durability
- 6 stainless steel ball bearings + 1 roller bearing provides smooth operation
- Lightweight graphite body and rotor

MODEL #	SAP #	ACTIONS	LENGTH	PIECES	REEL	CAPACITY	GEAR RATIO	BEARINGS
CARDSTX5/562L	1271142	L	5'6"	2	CARDSTX5	4 lb/100 yd	5.2:1	7
CARDSTX10/601ML	1271143	ML	6'0"	1	CARDSTX10	6 lb/110 yd	5.2:1	7
CARDSTX20/601M	1271144	M	6'0"	1	CARDSTX20	8 lb/130 yd	5.1:1	7
CARDSTX30/661M	1271145	M	6'6"	1	CARDSTX30	8 lb/175 yd	5.1:1	7
CARDSTX30/662M	1271146	M	6'6"	2	CARDSTX30	8 lb/175 yd	5.1:1	7
CARDSTX40/701M	1271147	M	7'0"	1	CARDSTX40	12 lb/180 yd	5.1:1	7
CARDSTX40/702M	1271148	M	7'0"	2	CARDSTX40	12 lb/180 yd	5.1:1	7

CARDINAL® SX COMBO



SMOOTH, HASSLE-FREE SPINNING IN STYLE

- 24 Ton graphite for a lightweight balanced design
- High density EVA gives greater sensitivity and durability
- 5 stainless steel ball bearings + 1 roller bearing provides smooth operation
- Lightweight graphite body and rotor

MODEL #	SAP #	ACTIONS	LENGTH	PIECES	REEL	CAPACITY	GEAR RATIO	BEARINGS
CARDSX5/562L	1271149	L	5'6"	2	CARDSX5	4 lb/100 yd	5.2:1	6
CARDSX10/601ML	1271150	ML	6'0"	1	CARDSX10	6 lb/110 yd	5.2:1	6
CARDSX20/601M	1271151	M	6'0"	1	CARDSX20	8 lb/130 yd	5.1:1	6
CARDSX10/702L	1271152	L	7'0"	2	CARDSX10	6 lb/110 yd	5.2:1	6
CARDSX30/661M	1271153	M	6'6"	1	CARDSX30	8 lb/175 yd	5.1:1	6
CARDSX30/662M	1271154	M	6'6"	2	CARDSX30	8 lb/175 yd	5.1:1	6
CARDSX40/701M	1271155	M	7'0"	1	CARDSX40	12 lb/180 yd	5.1:1	6
CARDSX40/702M	1271156	M	7'0"	2	CARDSX40	12 lb/180 yd	5.1:1	6

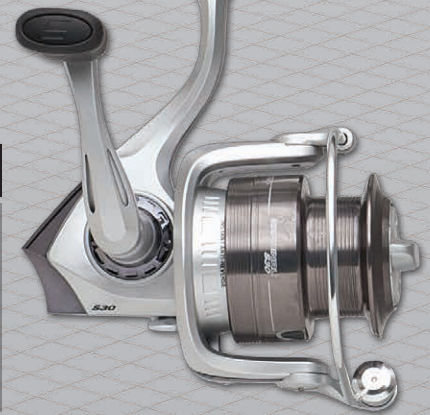
CARDINAL® S COMBO



OUTSTANDING VERSATILITY, DEPENDABILITY AND VALUE

- High density EVA gives greater sensitivity and durability
- 3 stainless steel ball bearings + 1 roller bearing provides smooth operation
- Lightweight graphite body and rotor

MODEL #	SAP #	ACTIONS	LENGTH	PIECES	REEL	CAPACITY	GEAR RATIO	BEARINGS
CARDS5/562L	1271157	L	5'6"	2	CARDS5	4 lb/100 yd	5.2:1	4
CARDS10/601ML	1271158	ML	6'0"	1	CARDS10	6 lb/110 yd	5.2:1	4
CARDS20/601M	1271159	M	6'0"	1	CARDS20	8 lb/130 yd	5.1:1	4
CARDS30/661M	1271160	M	6'6"	1	CARDS30	8 lb/175 yd	5.1:1	4
CARDS30/662M	1271161	M	6'6"	2	CARDS30	8 lb/175 yd	5.1:1	4
CARDS40/701M	1271162	M	7'0"	1	CARDS40	12 lb/180 yd	5.1:1	4
CARDS40/702M	1271163	M	7'0"	2	CARDS40	12 lb/180 yd	5.1:1	4



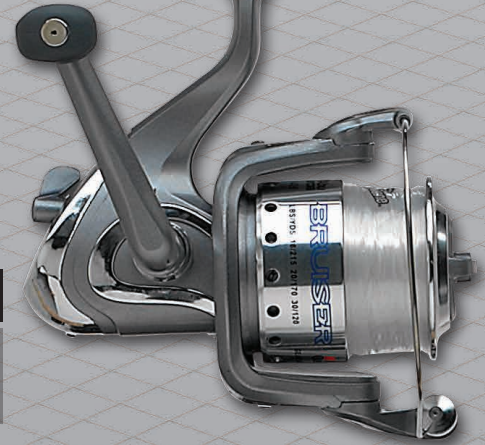
CARDINAL® BRUISER COMBO



BRUISER TOUGH FOR BIG FISHING APPLICATIONS

- Durable saltwater size reel with 4 bearing drive
- Saltwater tough rod with EVA handle
- Prespooled with Berkley® Trilene®

MODEL #	SAP #	ACTIONS	LENGTH	PIECES	REEL	CAPACITY	GEAR RATIO	BEARINGS
BRSB72/5	1130205	MH	7'0"	2	50	20 lb/170 yd	4.2:1	4
BRS82/5	1130206	MH	8'0"	2	50	20 lb/170 yd	4.2:1	4
BRSB92/5	1130207	MH	9'0"	2	50	20 lb/170 yd	4.2:1	4

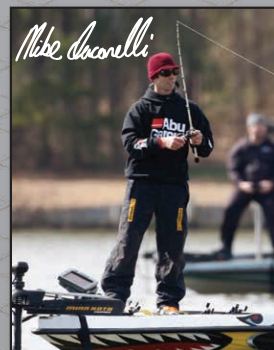


IKE DUDE YOUTH COMBO

ike NEVER GIVE UP

PRECISION FOR YOUNG ANGLERS, INSPIRED BY MIKE IACONELLI

- 2 ball bearings
- Lightweight graphite body and rotor
- High density EVA gives greater sensitivity and durability
- Texas rigged hook keeper for all bait applications



MODEL #	SAP #	ACTIONS	LENGTH	PIECES	REEL	CAPACITY	GEAR RATIO	BEARINGS
IKESP30/601M	1236666	M	6'0"	1	30	6 lb/115 yd	4.9:1	2

CARBON FIBER HANDLE

- Lightweight carbon handle
- Ergonomic bent handle design
- Fits either EVA or PVC handle knobs

MODEL #	SAP #
CARBENT	1237137

EVA KNOBS - LARGE

- Provides increased grip
- Lightweight EVA knobs
- Do not freeze or overheat
- Resistant to slip
- Fits all Abu Garcia LP Handle types

MODEL #	SAP #
EVALRG	1237130

EVA KNOBS - STANDARD

- Lightweight EVA knobs
- Do not freeze or overheat
- Resistant to slip
- Fits all Abu Garcia Handle types

MODEL #	SAP #
EVAMED	1237131

EXTENDED POWER HANDLE

- Increase torque and power
- Ergonomic bent handle design
- Fits either EVA or PVC handle knobs

MODEL #	SAP #
EXTBENT	1237134

EVA KNOB - STANDARD SINGLE

- Standard single
- Lightweight EVA knobs
- Do not freeze or overheat
- Resistant to slip

MODEL #	SAP #
EVASTDSP	1237133

DECALS


MODEL #	SAP #	DESCRIPTION
ABUSW5	1264449	ABUSW5 ABU GARCIA STICKER WHITE 5
ABUSB12	1264628	ABUSB12 ABU BLACK-FULL COLOR STICKER 12
ABUSW12	1264629	ABUSW12 ABU WHITE-FULL COLOR STICKER 12

NEOPRENE CASE



MODEL #	SAP #	DESCRIPTION
ABU5000	1237139	Fits all 5000 Abu Garcia Ambassadeur round reels
ABU6000	1237140	Fits all 6000 Abu Garcia round Ambassadeur reels
ABU7000	1237141	Fits all 7000 Abu Garcia Ambassadeur round reels
ABULP	1237142	Fits all Abu Garcia LP reels
ABUSPINMED	1237143	Fits all 10, 20, 30, 40 size Abu Garcia Spinning Reels

NEOPRENE CASE

- 2mm neoprene cover
- Cover will fit while on rod

ACCESSORIES LUBE & POWER HANDLE



MODEL #	SAP #	DESCRIPTION
PHA-B	1091026	Black Baitcast Handle
PHA-S	1091025	Silver Baitcast Handle

MODEL #	SAP #	DESCRIPTION
65005	1016493	Reel Lube
65020	1016494	Reel Oil



Pure Fishing, Inc., a subsidiary of Jarden Corporation (NYSE: JAH)
www.abugarcia.com